

THE BENCHMARK IN ULTRA-LUXURY CRUISING



With world-class features like spacious suites with butler service, up to 10 dining experiences, and cutting-edge technology, a charter on the Scenic Eclipse fleet can take your voyage to sensational new heights. This gives clients the perfect opportunity to customize their experience, from entertainment, menus, ports of call, and more.

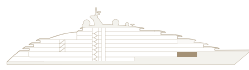


STATE-OF-THE-ART THEATER



This state-of-the-art theater is perfect for meetings, presentations, and training sessions. Three ultrawide digital screens, a 360° surround sound audio system, and production grade A/V setups always get the message across.

4,736 sq. ft. (440 sq. m.)
Audiovisual, Sound System, Lighting
and Video included
Total Capacity: 122*



■ Deck 4

*122 Recliner/Lounge seats. Seating numbers vary per ship, contact us for more specific details.

SCENIC LOUNGE & BAR



With multiple lounge areas in this space, it is ideal for everything from stargazing to strategizing while enjoying inclusive premium beverages. For example, the Whiskey Bar with over 100 varieties of whiskey, is just one of up to nine bars and lounges available onboard the Discovery Yachts.

2,368 sq. ft. (220 sq. m.)

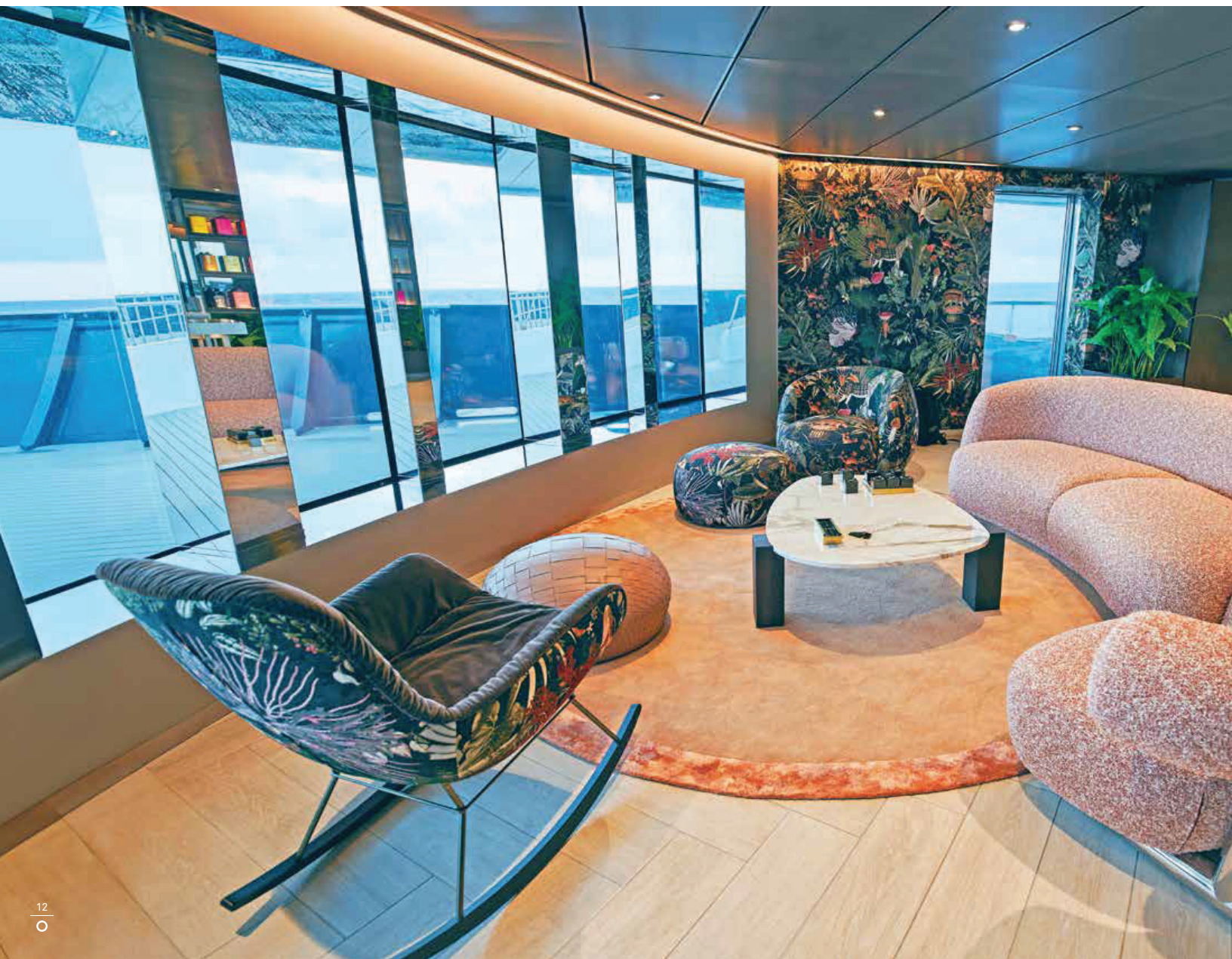
90 Seats

Total Capacity: 90 Guests

Scenic Eclipse II has eight bars and lounges. Images are illustrative and may vary between ships.
Seating numbers vary per ship, contact us for more specific details.







LIBRARY, OBSERVATION LOUNGE & TERRACE



Guests can always find a comfy, quiet spot and spectacular ocean views for relaxing with a book or for playing a lively game of chess while enjoying a specialty coffee or tea.

1,237 sq. ft. (115 sq. m.)

Total Seats: 40

Total Capacity:

40 Guests Indoors | 100 - 150 Guests Outdoors

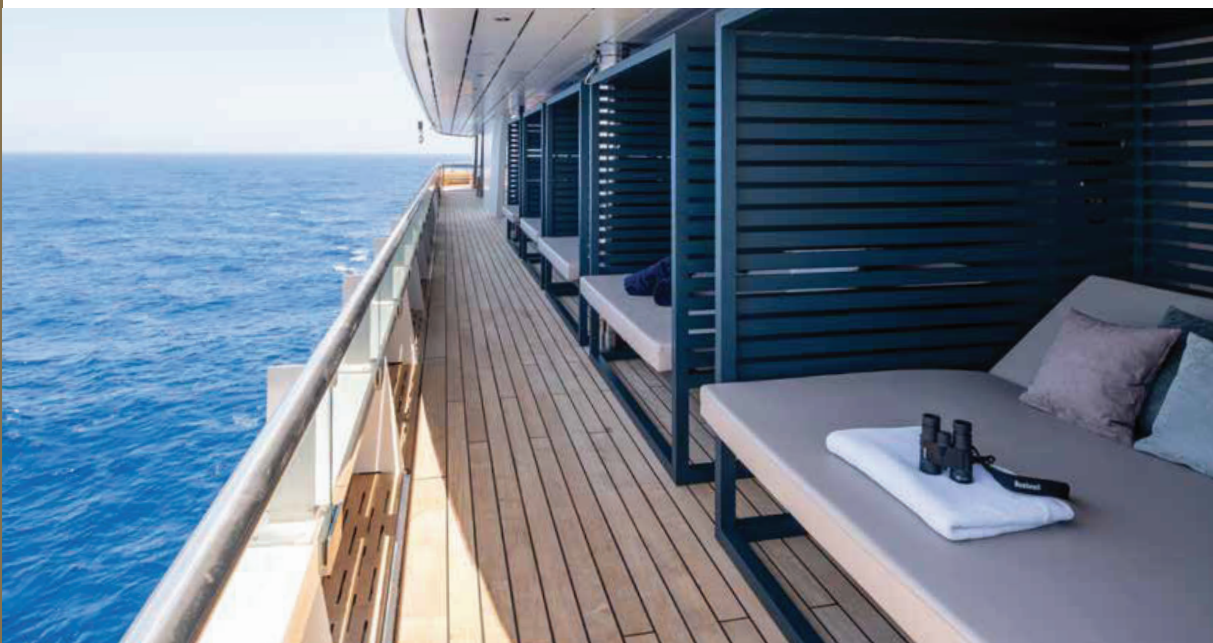


Deck 5

Seating numbers vary per ship, contact us for more specific details.

SKY BAR & DECK

Scenic Eclipse



Head to Deck 10 to experience the Sky Bar, offering open air and spectacular views. Sip an expertly crafted cocktail while resting on sun loungers alongside the outdoor pool or in the secluded cabanas.

4,467 sq. ft. (415 sq. m.)
10 Cabanas | 16 Lounge Chairs | 8 Lounge Beds
Total Capacity: 60 Guests

Seating numbers vary per ship, contact us for more specific details.



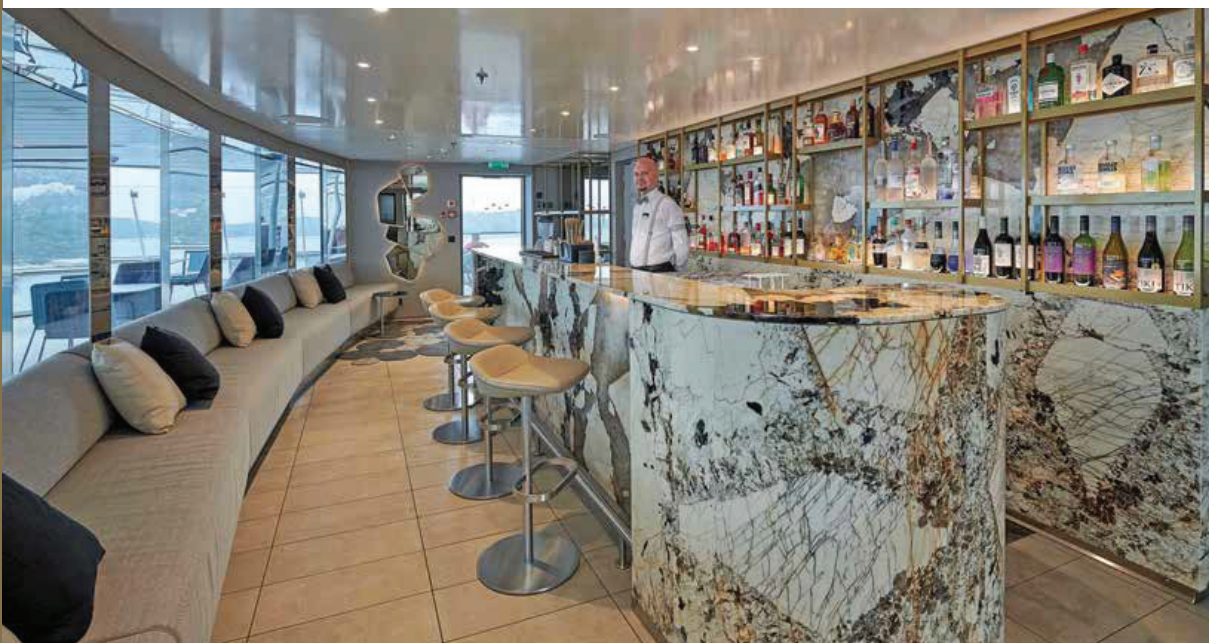
Deck 10





SKY BAR & DECK

Scenic Eclipse II



Enjoy an enhanced upper deck experience featuring 270-degree views and a Sky Bar with indoor and outdoor seating including six private cabanas. The custom-designed Vitality Pool's special jets let you swim in place for an invigorating workout.

4,467 sq. ft. (415 sq. m.)
6 Cabanas | 72 Lounge Chairs & Sofas | 16 Lounge Beds
Total Capacity: 94 Guests

Seating numbers vary per ship, contact us for more specific details.







YACHT CLUB



Find your alfresco dining oasis at the Yacht Club on Deck 7. Settle in to enjoy a full breakfast and lunch buffet-style meal and house-made gelato from the relaxed sophistication of outdoor sofas and swinging chairs with spectacular views from the aft of the yacht.

3,282 sq. ft. (305 sq. m.)
Total Seats: 118 Seats



Deck 7

Seating numbers vary per ship, contact us for more specific details.

LUMIÈRE

Restaurant & Champagne Bar



Indulge in exceptional French cuisine. Lumière's elegant and modern setting accommodates up to 30 guests, is available exclusively for dinner service, and includes a beautiful Champagne Bar offering caviar with pre-dinner drinks.

1,292 sq. ft. (120 sq. m.)

Total Seats: 35 Guests

Seating numbers vary per ship, contact us for more specific details.



Deck 5





AZURE BAR & CAFE



From barista-made morning coffee to after-dinner biscotti and chocolate delights, Azure Bar & Café has options for relaxed snacking all day. Indoor spaces and outdoor terrace seating are ideal for light fare, pizzas, salads, snacks and many more options.

1,076 sq. ft. (100 sq. m.)
Total Capacity: 85 Guests

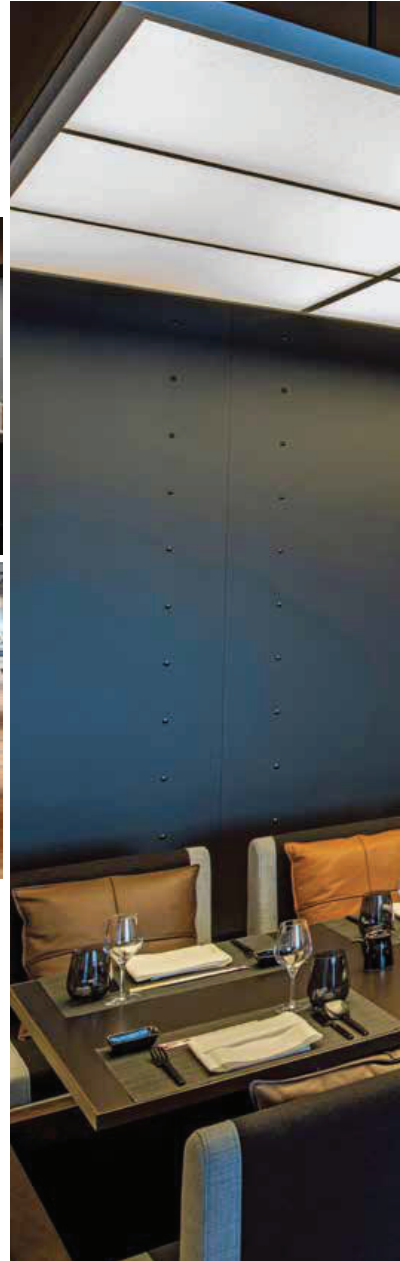


Deck 5

Seating numbers vary per ship, contact us for more specific details.

KOKO'S

Asian Fusion Restaurant | Night Market | Sushi & Saké Bar



Koko's buzzing atmosphere offers multiple luxurious dining experiences. Try authentic cuisine where you can share plates and explore new flavors. Enjoy fresh sushi hand-made just feet away from you. Or reserve a spot for a meal in Night Market with dishes from Asia, India, and the Middle East prepared in front of you on a teppanyaki grill.

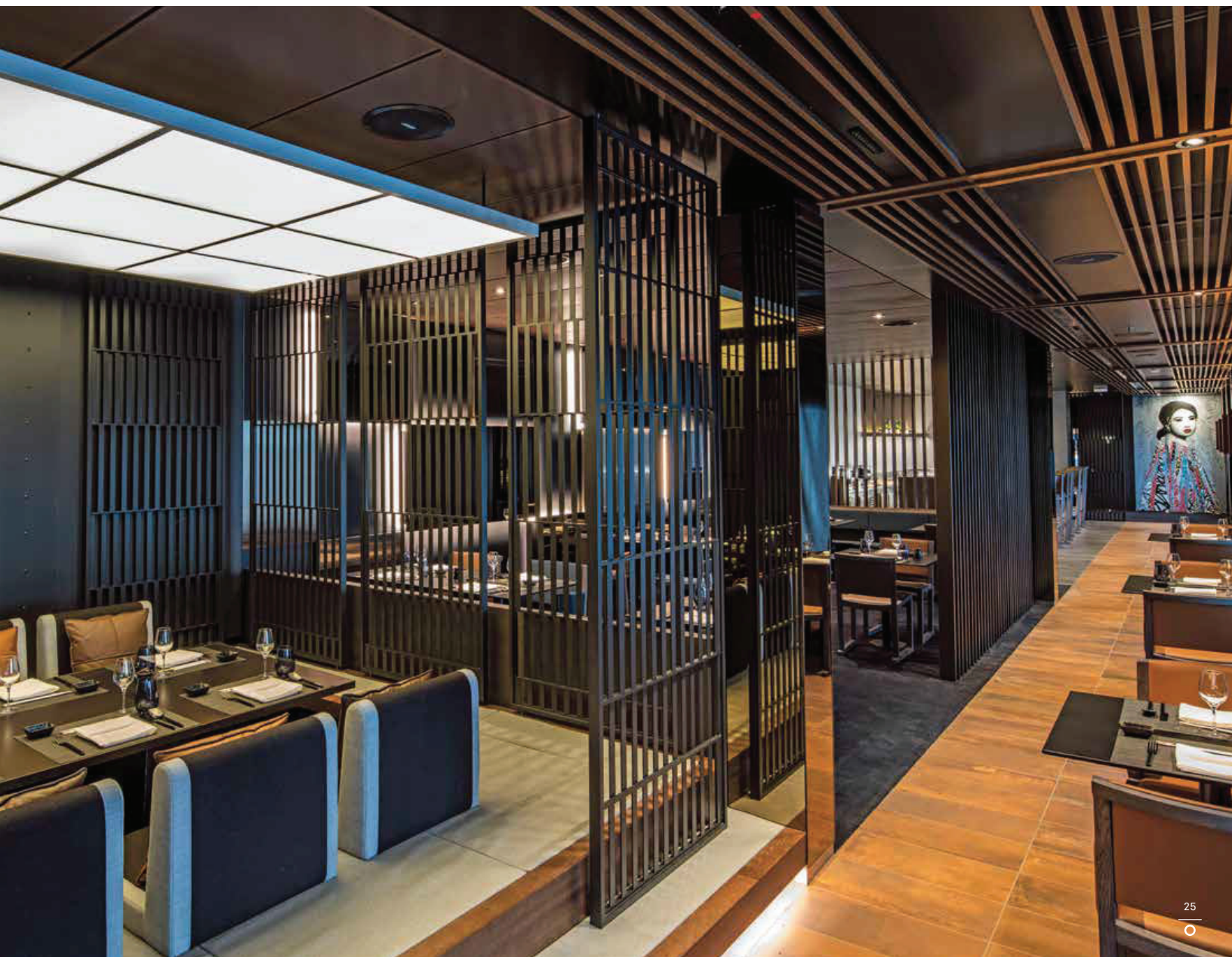
1,883 sq. ft. (175 sq. m.)

Koko's Asian Fusion: 46 guests | Night Market @ Koko's: 8 guests | Sushi @ Koko's: 16 guests
Total Capacity: 60 Guests

Seating numbers vary per ship, contact us for more specific details.
Images are indicative and features may vary between ships.



■ Deck 4





ELEMENTS

Restaurant & Wine Bar



Make yourself comfortable at Elements for a relaxed dining option offering an à la carte dinner menu with Italian, steak, and seafood plus the bar's fine wine selection and international cheese menu.

3,013 sq. ft. (280 sq. m.)
Total Capacity: 120 Guests



Deck 4

Seating numbers vary per ship, contact us for more specific details.



CHEF'S TABLE

@ Elements



The Chef's Table @ Elements is a private experience for 10 guests. This exquisite dégustation meal includes 11 courses, each paired with premium beverages and presented by the Executive Chef and the culinary team who detail the techniques and origins of the ingredients used in each creation. By invitation only.

269 sq. ft. (25 sq. m.)

1 Table | 10 Seats

Total Capacity: 10 Guests



Deck 4

Seating numbers vary per ship, contact us for more specific details.

CHEF'S GARDEN

@ Epicure



Take a masterclass* leading you on a gastronomic journey with our expert chefs. Gather around special cooking stations to learn the techniques they use to create authentic, traditional dishes based on the regions you'll cruise through.

484 sq. ft. (45 sq. m.)
8 Seats

Seating numbers vary per ship, contact us for more specific details.
*Only available on Scenic Eclipse.

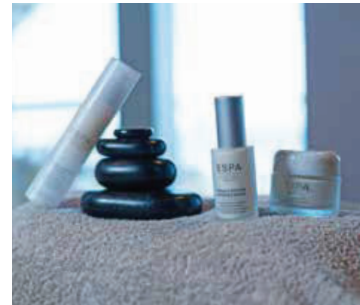


Deck 5



Ocean Cruising SUITE AMENITIES

	Verandah & Deluxe Verandah Suites	Grand Deluxe Verandah Suites	Spa Suites*	Panorama & Grand Panorama Suites	Owners Penthouse Suites*
Unlimited, All Day Drinks	○	○	○	○	○
Airport Transfers to and from the ship	○	○	○	○	○
Private airport transfers to and from the ship**				○	○
Complimentary mini bar, re-stocked daily	○	○	○	○	○
Complimentary WiFi internet	○	○	○	○	○
Luxury Scenic Slumber bed (King Size)	○	○	○	○	○
Pillow Menu	○	○	○	○	○
ESPA Bathroom amenities	○	○	○	○	○
Walk-in closet (not guaranteed for veranda & deluxe)	○	○	○	○	○
His and hers walk-in closet					○
Luxurious bath amenities (Dyson hairdryer included)	○	○	○	○	○
Double size Philippe Starck designed spa bath			○		
HDTV, Bose sound system and safe	○	○	○	○	○
Nightly turn down service	○	○	○	○	○
Private Verandah or terrace	○	○	○	○	
Outdoor terrace with lounge area, sun loungers and private jacuzzi					○
Separate lounge and sleep zone	○	○	○	○	○
Separate dining area				○	○
Daily delivery of canapes or fruit				○	○
Priority dining in specialty restaurants and choice of shore excursions				○	○
"Creator" Walking sticks/poles	○	○	○	○	○
Complimentary self-service machines are available for all suite categories	○	○	○	○	○
Complimentary laundry service, 10 pieces per day			○	○	
Unlimited complimentary laundry service					○



*Combine our Owner's Penthouse Suite with a Spa Suite to create a magnificent Two-bedroom Penthouse Suite.
Suites 901 & 903 and 902 & 904 connect as a Two-bedroom Penthouse Suite. **Private Transfers - not available in all locations.
Images are indicative and features may vary between ships.

Ocean Cruising BUTLER SERVICES

	Verandah & Deluxe Verandah Suites	Grand Deluxe Verandah Suites	Spa Suites	Panorama & Grand Panorama Suites	Owners Penthouse Suites
Early morning tea/coffee service	○	○	○	○	○
Beverage service	○	○	○	○	○
Shoeshine service	○	○	○	○	○
En-suite breakfast service	○	○	○	○	○
Serving meals in your private suite	○	○	○	○	○
Draw a bath			○	○	○
Packing and unpacking your luggage	○	○	○	○	○
Concierge Service (arranging theater tickets, limousines, shore excursions or salon appointments)	○	○	○	○	○



ULTRA-LUXURY SUITES



Verandah Suite & Deluxe Verandah Suite | Decks 5-8

Suite sizes: 344-366 sq. ft. (32-34 sq. m.)

Our Verandah and Deluxe Verandah Suites provide a spacious and comfortable introduction to ocean cruising with the finest appointments and amenities.

Grand Deluxe Verandah Suite | Decks 5-8

Suite size: 409-430 sq. ft. (38-40 sq. m.)

Choose from the larger Grand Deluxe Verandah Suites, which provide even more room to relax.

Spa Suite | Decks 8-9

Suite size: 495-538 sq. ft. (46-50 sq. m.)

Located on the higher decks, our luxurious Spa Suites include additional features and services that will enhance the luxury of your time on board.



Note: spa bath designs may vary per ship



Panorama Suite | Deck 8 Bow

Suite size: 1,184 sq. ft. (110 sq. m.)

Located at the front of the yacht on Deck 8, these opulent suites feature curved terraces, spacious interiors, additional services, and more.



Panorama Suite | Deck 6 Bow

Suite size: 1,130 sq. ft. (105 sq. m.)

Located at the front of the yacht on Deck 6, these opulent suites feature curved terraces, spacious interiors, additional services, and more.



Suite layouts are indicative and may vary between ships, contact us for more specific details.

ULTRA-LUXURY SUITES

Owner's Penthouse Suite | Deck 9

Suite size: 2,099 sq. ft. (195 sq. m.)

Our oversized Owner's Penthouse Suites are the ultimate indulgence. Located on Deck 9 and elegantly appointed with spacious curved terraces featuring a private jacuzzi and the best views on board, you will never want to leave.

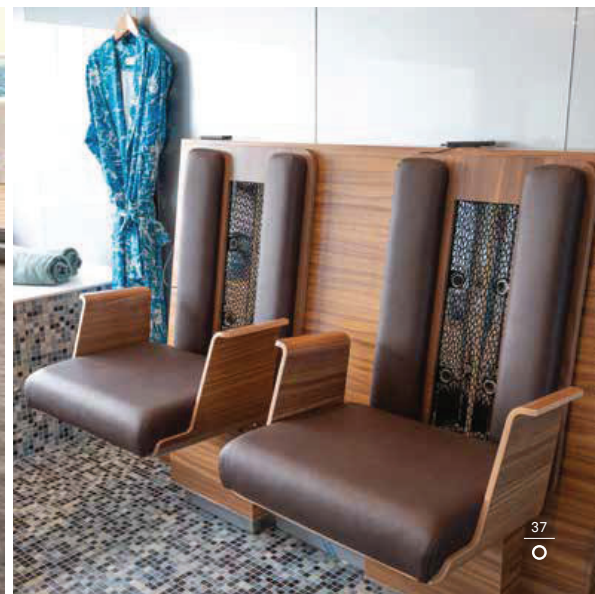


Two-bedroom Penthouse Suite | Deck 9

Suite size: 2,637 sq. ft. (245 sq. m.)

Combine our Owner's Penthouse Suite with a Spa Suite to create a magnificent Two-bedroom Penthouse Suite.





ON BOARD EXPERIENCES & SPACES



Senses Spa

With a 5,920 sq. ft. Senses Spa, gym, yoga and Pilates studio, state-of-the-art theater, library, outdoor terraces and pool areas there is space on board to meet every need for the ultimate Discovery Yacht experience.

PURE: Yoga & Pilates Room

Guests can rejuvenate in the only studio of its kind at sea. Along with traditional yoga classes, we offer TRX suspension strap and aerial options, as well as Pilates workouts, meditation, and Tibetan sound bowl healing.

POWER: Gym and Fitness

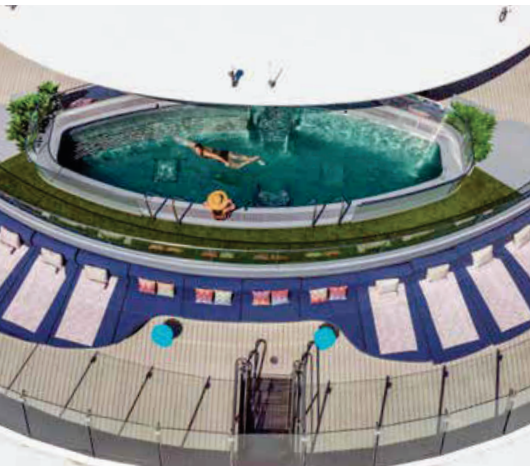
Truly all-inclusive luxury makes it easy to maintain your fitness routine during your voyage. Our state-of-the-art gym is equipped to let you get in strength and cardio sessions with stunning ocean views to keep you motivated.





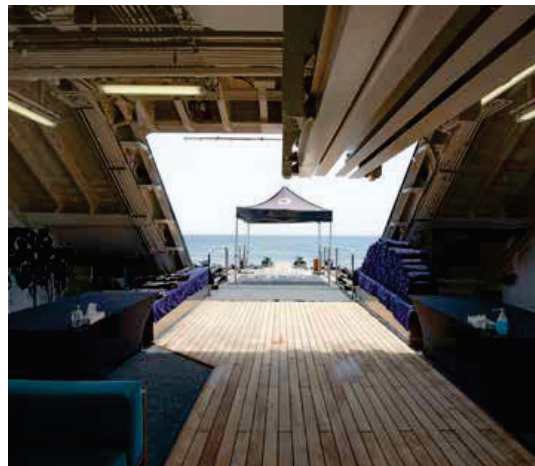
Vitality Pools

The luxurious Senses Spa was designed for indulging, especially in the indoor and outdoor temperature-controlled vitality pools. Take a blissful dip and give in to absolute tranquility.



Marina

The specially designed marina is perfect for launching excursions on Zodiacs, stand-up paddleboards, and kayaks, or just enjoying wake boarding, an inflatable trampoline, or snorkeling.



Helicopter & Submersible

Discover on a grander scale with excursions taking you above the horizon in one of two helicopters — or deep below it in a custom submersible*. They're all on board to give you unrivaled exploration.

*Available for an additional cost.



TRULY ALL-INCLUSIVE DISCOVERY

Enjoy unrivaled exploration on board Scenic Eclipse. From observing unique wildlife in Antarctica to an exclusive classical concert, our handcrafted experiences and expert Discovery Team will immerse you in remote and extraordinary destinations.



Scenic Expedition Voyages

Unrivaled exploration of extraordinary lands with:

- Up to 200 guests onboard in Antarctica and 228 in the Arctic
- A specialist Polar Discovery Team of up to 20 experts
- Engaging lectures and education program with on board experts
- Scenic Discovery Excursions by Zodiac
- Full kayak program and stand-up paddleboarding[^]
- Complimentary expedition parka and water bottle, plus use of special polar boots



Scenic Discovery Voyages

The perfect blend of expedition and cruise voyages with:

- Up to 228 guests on board for a truly exclusive Discovery Voyage in Australia, the Indonesian Archipelago, West Papua & The Solomon Islands, Polynesia and the Pacific Islands, Japan, and the Americas.
- A specialist Discovery Team of up to 15 experts
- Engaging lectures and education program with on board experts
- Scenic Discovery excursions and shore side expedition program
- Full kayak program and stand-up paddleboarding[^]
- Exclusive Scenic Enrich experiences
- Personalized Scenic Freechoice experiences



Scenic Cruise Voyages

Immersive on shore exploration with:

- Up to 228 guests on board for a luxurious yacht experience in Europe, the Mediterranean and Japan
- A specialist Discovery Team of up to four members to share insights on local history and culture
- Entertainment in the state-of-the-art theater
- Explore by E-bike[^]
- Full kayak program and stand-up paddleboarding[^]
- Range of water sporting activities, from snorkeling to water skiing
- Exclusive Scenic Enrich experiences
- Personalized Scenic Freechoice experiences

[^]Equipment availability may vary based on itinerary. Kayaks, stand-up paddleboards and e-bikes may not be available in all regions.



  *Scenic Discovery Excursions*

Scenic Discovery excursions offer rich insights and exploration of your chosen destination. Our expert Discovery Team of naturalists, marine biologists, historians, geologists and expert local guides accompany guests and share their knowledge from their local experience, and in-depth research of the region. Cruise on the Zodiacs around ice formations, go on nature walks through the Arctic tundra, snorkel in the clear waters of the Caribbean and kayak along the Brazilian coast.



  *Scenic Freechoice*

Choose from a wide range of Scenic Freechoice activities, meticulously curated to cater to your fitness level and interest. Visit the medieval village of Eze, enjoy a cooking class with fresh du paize pasta, explore Boston by bike, or see the power of Iceland at the Dettifoss Waterfall. From an active to relaxed pace, there's something for everyone.



  *Scenic Enrich*

Enjoy unique and exclusively handcrafted encounters in the most spectacular surroundings with Scenic Enrich. Savor an exclusive classical concert from the Harpsody Orchestra, performed in one of the historic halls of the Oceanographic Museum, or witness the authentic flamenco ballet production Carmen. Go behind the scenes to enjoy private access and immersive experiences of iconic locations, that take you to the heart of your destination, creating memories that will stay with you forever.







THE WORLD'S FIRST DISCOVERY YACHTS™

1 *Kayaks & Stand-up Paddleboards*

Discover nature up-close in our tandem kayaks and stand-up paddleboards. Enjoy truly all-inclusive, active explorations.

2 *Two Helicopters[^]*

Soar above breathtaking landscapes by helicopter and discover the many wonders beyond the horizon.

3 *GPS Dynamic Positioning System*

Maintains the Discovery Yacht's location without dropping anchor onto sensitive seabeds.

4 *Observation Deck*

Spacious Observation Terrace overlooking the front of the yacht with sweeping views.

5 *Observation Lounge*

Provides optimal viewing with Swarovski telescopes and a place to relax.

6 *Advanced Heating & Ventilation*

Advanced Heating, Ventilation and Air Conditioning System (HVAC) provides 100% fresh air throughout the Discovery Yachts.

7 *Up to 10 Dining Experiences*

Enjoy a culinary journey at up to 10 dining experiences, ranging from casual to fine dining, including 24-hour in-suite dining.

8 *Senses Spa Boasts 5,920 sq. ft. of Pure Indulgence*

The exclusive Senses Spa boasts 5,920 sq. ft. of pure indulgence and tranquility, featuring an extensive menu of luxury treatments*.

9 *Electronic Azipod Propulsion System Enable Safe Navigation*

A strengthened hull, forward bow thrusters and an electronic Azipod propulsion system enable safe navigation.

10 *Theater*

The state-of-the-art theater hosts entertainment, lectures and education programs.

11 *Bars & Lounges*

With nine bars and lounges on Scenic Eclipse, and eight on Scenic Eclipse II, there's plenty of space to relax in our indoor and outdoor spaces.

12 *Oversized Stabilizers*

Custom-built Stabilizers are 50% larger than other ships, providing greater stability for navigating waters and disembarking for shore excursions.

13 *Marina*

The specially designed marina makes boarding our Zodiacs and kayaks a breeze, as well as access to our warm water activities.

14 *Submersible[^]*

Dive below and explore the delights and mysteries of the deep on an unforgettable excursion in our submersible.

15 *Zodiacs*

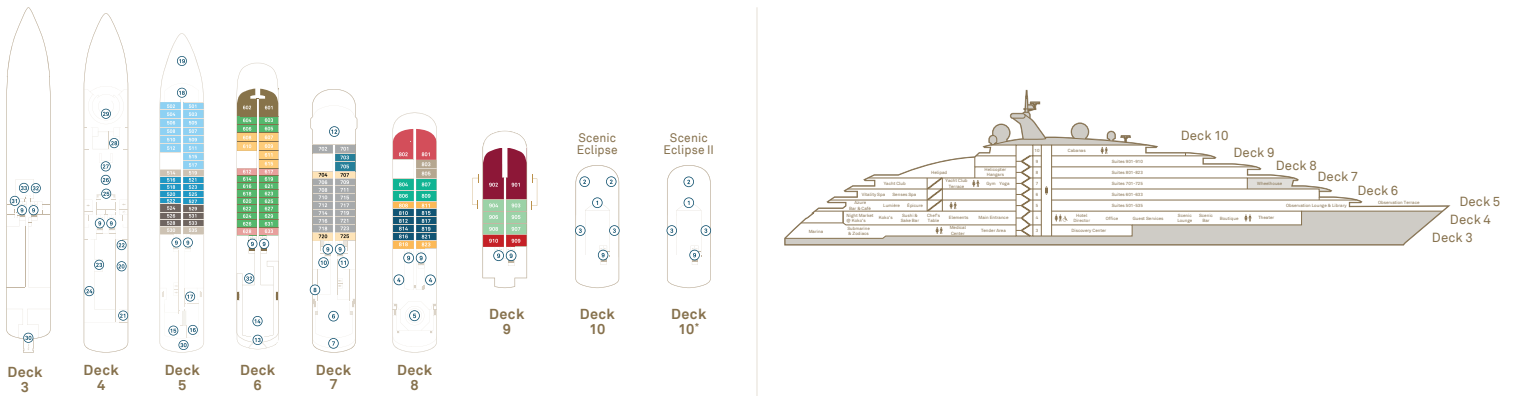
The fleet of Zodiacs will take you to the heart of your destination.

[^]Flights on board our two helicopters, helicopter experiences and submersible at additional cost, subject to regulatory approval, availability, weight restrictions, medical approval and weather and ice conditions. *Spa treatments at additional cost. NB: Some images are artist's impressions.

DECK PLANS

Scenic Eclipse and Scenic Eclipse II

Built 2018/2023 | Guests 200/228 | Suites 114 | Crew 192/176 | Length 551 ft. (167 m.) | Gross Tonnage 17,085 | Speed 17 knots



Deck Plan

- ① Sky Deck Bar
- ② Sky Deck Vitality Pool*
- ③ Cabanas
- ④ Helicopter hangars
- ⑤ Helipad
- ⑥ Yacht Club
- ⑦ Yacht Club outdoor dining
- ⑧ Hanging Chairs
- ⑨ Elevator
- ⑩ Yoga & Pilates room
- ⑪ Gym & fitness area
- ⑫ Wheelhouse
- ⑬ Spa Vitality Pool
- ⑭ Senses Spa
- ⑮ Lumière
- ⑯ Azure Bar & Café
- ⑰ Scenic Épicure
- ⑱ Observation Lounge & Library
- ⑲ Observation Terrace
- ⑳ Koko's
- ㉑ Night Market @ Koko's
- ㉒ Sushi @ Koko's
- ㉓ Chef's Table@ Elements
- ㉔ Elements
- ㉕ Guest Services
- ㉖ Scenic Lounge
- ㉗ Scenic Bar
- ㉘ Boutique
- ㉙ Theater
- ㉚ Marina entrances
- ㉛ Medical Center
- ㉜ Self-service guest laundry†
- ㉝ Discovery Center

Suite Categories

CAT	Deck 5	Qty	Size	CAT	Deck 6	Qty	Size	CAT	Deck 7	Qty	Size
DD	Grand Deluxe Verandah Suite	14	409-430 sq. ft. / 38-40 sq. m.	GP	Grand Panorama Suite	2	1,130 sq. ft. / 105 sq. m.	BD	Grand Deluxe Verandah Suite	2	409-430 sq. ft. / 38-40 sq. m.
DB	Deluxe Verandah Suite	8	344-366 sq. ft. / 32-34 sq. m.	CD	Grand Deluxe Verandah Suite	6	409-430 sq. ft. / 38-40 sq. m.	BA	Deluxe Verandah Suite	16	344-366 sq. ft. / 32-34 sq. m.
DA	Deluxe Verandah Suite	6	344-366 sq. ft. / 32-34 sq. m.	CA	Deluxe Verandah Suite	18	344-366 sq. ft. / 32-34 sq. m.	B	Verandah Suite	4	344 sq. ft. / 32 sq. m.
D	Verandah Suite	4	344 sq. ft. / 32 sq. m.	C	Verandah Suite	4	344 sq. ft. / 32 sq. m.				
CAT	Deck 8	Qty	Size	CAT	Deck 9	Qty	Size				
P	Panorama Suite	2	1,184 sq. ft. / 110 sq. m.	OT	Two-bedroom Penthouse	2	2,637 sq. ft. / 245 sq. m.				
S	Spa Suite	4	495-538 sq. ft. / 46-50 sq. m.	OP	Owner's Penthouse	2	2,099 sq. ft. / 195 sq. m.				
AD	Grand Deluxe Verandah Suite	2	409-430 sq. ft. / 38-40 sq. m.	SB	Spa Suite	6	495-538 sq. ft. / 46-50 sq. m.				
AA	Deluxe Verandah Suite	8	344-366 sq. ft. / 32-34 sq. m.	SA	Spa Suite	2	495-538 sq. ft. / 46-50 sq. m.				
A	Verandah Suite	4	344 sq. ft. / 32 sq. m.								

* Suites 901 & 903 and 902 & 904 connect as a Two-bedroom Penthouse Suite.

† Laundry is located on Deck 6 on Scenic Eclipse II.

* Available on Scenic Eclipse II.



The deck plan and suite layout images are an indication only and may vary between ships. Suite measurements are approximate, and those in same category may vary in size.

Scenic Eclipse Yachts AT A GLANCE

Venue	Size	Seating	Total Capacity
THEATER	4,736 sq. ft. (440 sq. m.)	Seats 122	122 Guests
SCENIC LOUNGE & BAR	2,368 sq. ft. (220 sq. m.)	Seats 90	90 Guests
OBSERVATION LOUNGE & LIBRARY	1,237 sq. ft. (115 sq. m.)	Seats 40	
SKY DECK featuring Sky Bar SCENIC ECLIPSE	3,800 sq. ft. (353 sq. m.)	Sky Bar 26 Cabanas 10 Lounge Chairs 20 Lounge Beds 16	Sky Deck 54 Guests Sky Bar 26 Guests
SKY DECK featuring Sky Bar SCENIC ECLIPSE II	Sky Deck 4,025 sq. ft. (374 sq. m.) Sky Bar interior 441 sq. ft. (41 sq. m.)	Sky Bar 20 Cabanas 6 Lounge Chairs 16 Lounge Beds 8	Sky Deck 94 Guests Sky Bar 22 Guests
YACHT CLUB	3,282 sq. ft. (305 sq. m.)	Seats 118	
LUMIÈRE	1,292 sq. ft. (120 sq. m.)	Seats up to 30, by reservation	
AZURE BAR & CAFE	1,076 sq. ft. (100 sq. m.)		85 Guests
	<i>Asian Fusion Restaurant</i> 1,883 sq. ft. (175 sq. m.)	Seats 46	46 Guests
KOKO'S	<i>Night Market</i> 269 sq. ft. (25 sq. m.)	Seats 8, by reservation	16 Guests
	Sushi & Saké Bar 269 sq. ft. (25 sq. m.)	Seats 16, by reservation	16 Guests
ELEMENTS	3,013 sq. ft. (280 sq. m.)	Seats 120	120 Guests
CHEF'S TABLE @ ELEMENTS	269 sq. ft. (25 sq. m.)	Seats 10	10 Guests
CHEF'S GARDEN @ EPICURE	484 sq. ft. (45 sq. m.)	Seats 8 Standing 12	Up to 12 Guests [^]

[^]Seating numbers vary per ship and event configuration.