





# SCENIC SPACE-SHIPS

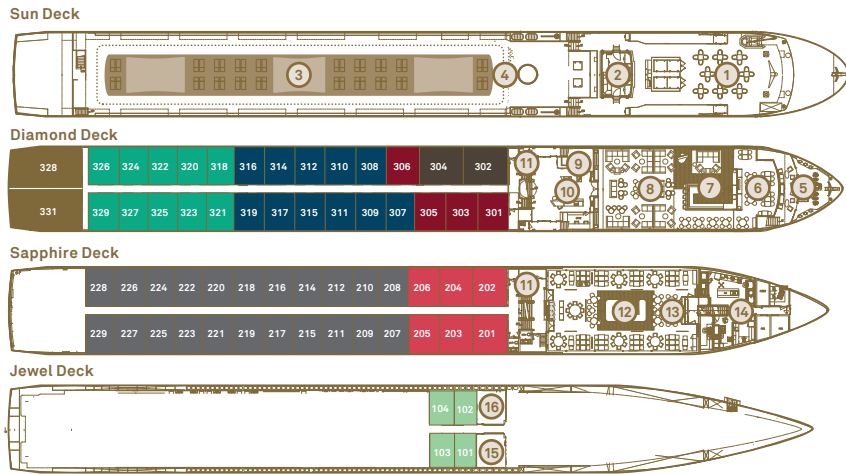
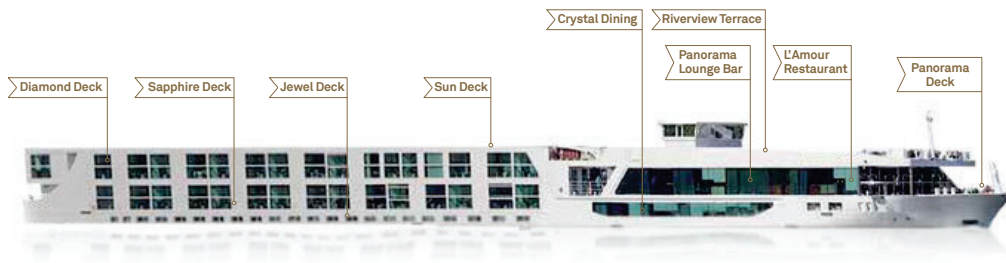
- 1 Diamond Deck**  
Featuring the pinnacle of our luxuriously appointed Royal, Junior and Balcony Suites, the Diamond Deck also hosts Portobellos Restaurant and the River Café.
- 2 Sapphire Deck**  
As well as our Deluxe Balcony Suites, Junior Suites and Balcony Suites, the Sapphire Deck is home to fine dining at Table La Rive and Crystal Dining.
- 3 Jewel Deck**  
A small selection of Standard Suites and the Wellness and Fitness Center are located on the Jewel Deck.
- 4 Balcony Suites**  
Balcony Suites with Scenic sun lounges. Watch the world glide by from your private Scenic sun lounge.
- 5 Standard Suites**  
Standard suites are located on the Jewel Deck with picture windows.
- 6 Wellness Area**  
Unwind or stay fit in the wellness area with massages<sup>^</sup>, modern gym and the exclusive Salt Therapy Lounge (on select Space-Ships).
- 7 Sun Deck & Riverview Terrace**  
The Sun Deck and Riverview Terrace are the perfect spots for 360° views, exercise on the walking track or a relaxing soak in the Vitality Pool (selected ships).
- 8 Panorama Lounge & Bar**  
Take a seat in the heart of the ship and enjoy a drink with friends old and new. Choose from fine regional wines and beers, spirits, cocktails, mocktails and specialty teas and coffee.
- 9 Crystal Dining**  
Our spacious main dining room serves breakfast, lunch and dinner with open seating.
- 10 Portobellos L'Amour**  
For just 32 guests each evening. At least once during your cruise, you will receive an invite to dine at Portobellos/L'Amour. The five-course menu features regional specialties paired with local wines.
- 11 Panorama Deck**  
Take in the views from the bow of the ship on the Panorama Deck. This is also a great spot to get an up-close view when passing through a ship lock.

Scenic Diamond is used as an example. Please note not all ships are equipped with all amenities or follow the same deck plan. This layout is a general indication only and may vary in some locations. In the event of a deviation some services and inclusions may not be provided in line with these depictions.  
<sup>^</sup>At additional cost.

# DECK PLANS

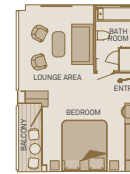
## Scenic Gem | Seine River

Built 2014 | Length 360 ft. (110 m.) | Guests 122 | Suites 61 | Crew 51 | Gross Tonnage 2,200



### Deck Plan

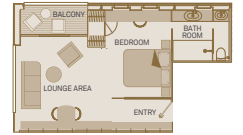
- ① Riverview Terrace
- ② Wheelhouse
- ③ Sun Deck
- ④ Walking Track
- ⑤ Panorama Deck
- ⑥ L'Amour Restaurant
- ⑦ River Café
- ⑧ Panorama Lounge & Bar
- ⑨ Gift Shop
- ⑩ Reception
- ⑪ Elevator
- ⑫ Crystal Dining
- ⑬ Table La Rive
- ⑭ Galley
- ⑮ Wellness Area
- ⑯ Fitness Center



#### Royal Balcony Suite

305 sq. ft./28 sq. m.  
Including Scenic sun lounge

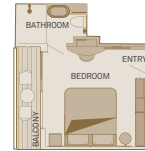
**R**



#### Royal One-Bedroom Suite

455 sq. ft./42 sq. m.  
Including Scenic sun lounge

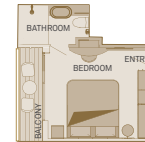
**RP**



#### Private Deluxe Balcony Suite

225 sq. ft./21sq. m.  
Including Scenic sun lounge

**PD BD**



#### Balcony Suite

205 sq. ft./19 sq. m.  
Including Scenic sun lounge

**PA P C**



#### Standard Suite

160 sq. ft./15 sq. m.

**E**

### Suite Categories

CAT	Diamond Deck	Qty	Size	CAT	Sapphire Deck	Qty	Size	CAT	Jewel Deck	Qty	Size
RP	Royal One-Bedroom Suite	2	455 sq.ft. / 42 sq. m.	C	Balcony Suite	22	205 sq.ft. / 19 sq. m.	E	Standard Suite	4	160 sq.ft. / 15 sq. m.
PA	Balcony Suite	10	205 sq.ft. / 19 sq. m.	BD	Deluxe Balcony Suite	6	225 sq.ft. / 21 sq. m.				
P	Balcony Suite	11	205 sq.ft. / 19 sq. m.								
PD	Deluxe Balcony Suite	4	225 sq.ft. / 21 sq. m.								
R	Royal Balcony Suite	2	305 sq.ft. / 28 sq. m.								

Suite 301 has a modified wardrobe and bathroom with personal assistance fittings. Images shown are a representation and actual deck plan and suite layout may vary. Deck plans shown are for 2025 Europe sailings and beyond. For 2024 versions, please visit scenicusa.com.