





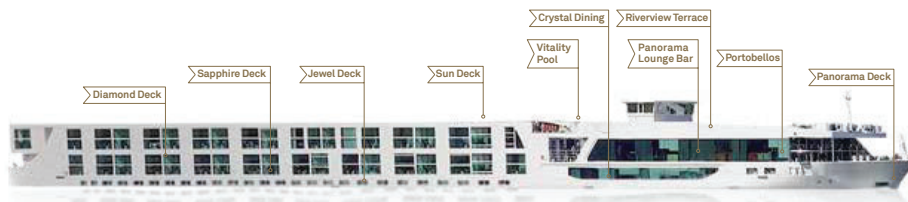
# SCENIC SPACE-SHIPS

- 1** *Diamond Deck*  
Featuring the pinnacle of our luxuriously appointed Royal, Junior and Balcony Suites, the Diamond Deck also hosts Portobellos Restaurant and the River Café.
- 2** *Sapphire Deck*  
As well as our Deluxe Balcony Suites, Junior Suites and Balcony Suites, the Sapphire Deck is home to fine dining at Table La Rive and Crystal Dining.
- 3** *Jewel Deck*  
A small selection of Standard Suites and the Wellness and Fitness Center are located on the Jewel Deck.
- 4** *Balcony Suites*  
Balcony Suites with Scenic sun lounges. Watch the world glide by from your private Scenic sun lounge.
- 5** *Standard Suites*  
Standard suites are located on the Jewel Deck with picture windows.
- 6** *Wellness Area*  
Unwind or stay fit in the wellness area with massages<sup>^</sup>, modern gym and the exclusive Salt Therapy Lounge (on select Space-Ships).
- 7** *Sun Deck & Riverview Terrace*  
The Sun Deck and Riverview Terrace are the perfect spots for 360° views, exercise on the walking track or a relaxing soak in the Vitality Pool (selected ships).
- 8** *Panorama Lounge & Bar*  
Take a seat in the heart of the ship and enjoy a drink with friends old and new. Choose from fine regional wines and beers, spirits, cocktails, mocktails and specialty teas and coffee.
- 9** *Crystal Dining*  
Our spacious main dining room serves breakfast, lunch and dinner with open seating.
- 10** *Portobellos L'Amour*  
For just 32 guests each evening. At least once during your cruise, you will receive an invite to dine at Portobellos/L'Amour. The five-course menu features regional specialties paired with local wines.
- 11** *Panorama Deck*  
Take in the views from the bow of the ship on the Panorama Deck. This is also a great spot to get an up-close view when passing through a ship lock.

Scenic Diamond is used as an example. Please note not all ships are equipped with all amenities or follow the same deck plan. This layout is a general indication only and may vary in some locations. In the event of a deviation some services and inclusions may not be provided in line with these depictions.  
<sup>^</sup>At additional cost.

## Scenic Jasper, Opal & Amber | Rhine, Main, Danube & Moselle Rivers

Refurbished 2019 | Built 2015/2016 | Length 443 ft. (135 m.) | Guests 163 | Suites 82 | Crew 57 | Gross Tonnage 2,721



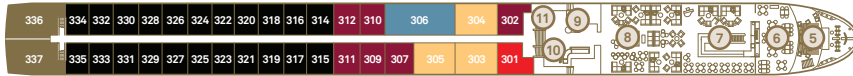
### Deck Plan

- ① Riverview Terrace
- ⑩ Reception
- ② Wheelhouse
- ⑪ Elevator
- ③ Sun Deck
- ⑫ Crystal Dining
- ④ Walking Track
- ⑬ Table La Rive
- ⑤ Panorama Deck
- ⑭ Galley
- ⑥ Portobellos Restaurant
- ⑮ Wellness Area
- ⑦ River Café
- ⑯ Fitness Center
- ⑧ Lounge & Bar
- ⑰ Vitality Pool
- ⑨ Gift Shop
- ⑱ Salt Therapy Lounge

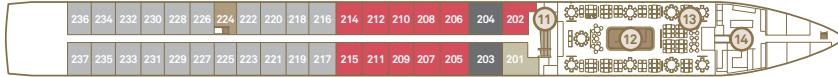
### Sun Deck



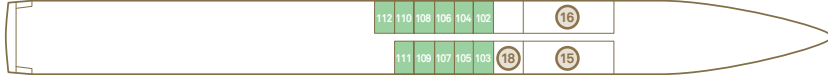
### Diamond Deck



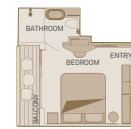
### Sapphire Deck



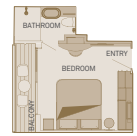
### Jewel Deck



**Standard Suite**  
160 sq. ft./15 sq. m.  
**E**



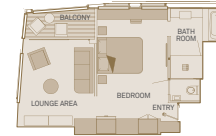
**Balcony Suite**  
205 sq. ft. / 19 sq. m.  
Including Scenic sun lounge  
**A C**



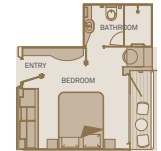
**Private Deluxe Balcony Suite**  
225 sq. ft./21 sq. m.  
Including Scenic sun lounge  
**PD BD**



**Royal Balcony Suite**  
360 sq. ft./33 sq. m.  
Including Scenic sun lounge  
**RR**



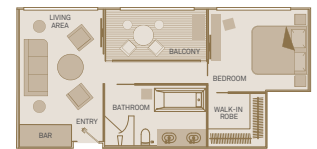
**Royal Panorama Suite**  
475 sq. ft./44 sq. m.  
Including Scenic sun lounge  
**RP**



**Junior Suite**  
250 sq. ft./23 sq. m.  
Including Scenic sun lounge  
**BJ RJ B1J**

### Suite Categories

CAT	Diamond Deck	Qty	Size	CAT	Sapphire Deck	Qty	Size	CAT	Jewel Deck	Qty	Size
RP	Royal Panorama Suite	2	475 sq. ft. / 44 sq. m.	C	Balcony Suite	21	205 sq. ft. / 19 sq. m.	E	Standard Suite	11	160 sq. ft. / 15 sq. m.
A	Balcony Suite	22	205 sq. ft. / 19 sq. m.	BS	Single Balcony Suite	1	150 sq. ft. / 14 sq. m.				
PD	Deluxe Balcony Suite	6	225 sq. ft. / 21 sq. m.	BD	Deluxe Balcony Suite	11	225 sq. ft. / 21 sq. m.				
RR	Royal Balcony Suite	3	360 sq. ft. / 33 sq. m.	BJ	Junior Balcony Suite	2	250 sq. ft. / 23 sq. m.				
RO	Royal Owner's Suite	1	520 sq. ft. / 48 sq. m.	B1J	Junior Balcony Suite	1	250 sq. ft. / 23 sq. m.				
RJ	Junior Balcony Suite	1	250 sq. ft. / 23 sq. m.								



**Royal Owner's Suite**  
520 sq. ft./48 sq. m.  
One bedroom suite including Scenic sun lounge  
**RO**

Images shown are a representation and actual deck plan and suite layout may vary.  
Deck plans shown are for 2025 Europe sailings and beyond. For 2024 versions, please visit scenicusa.com.