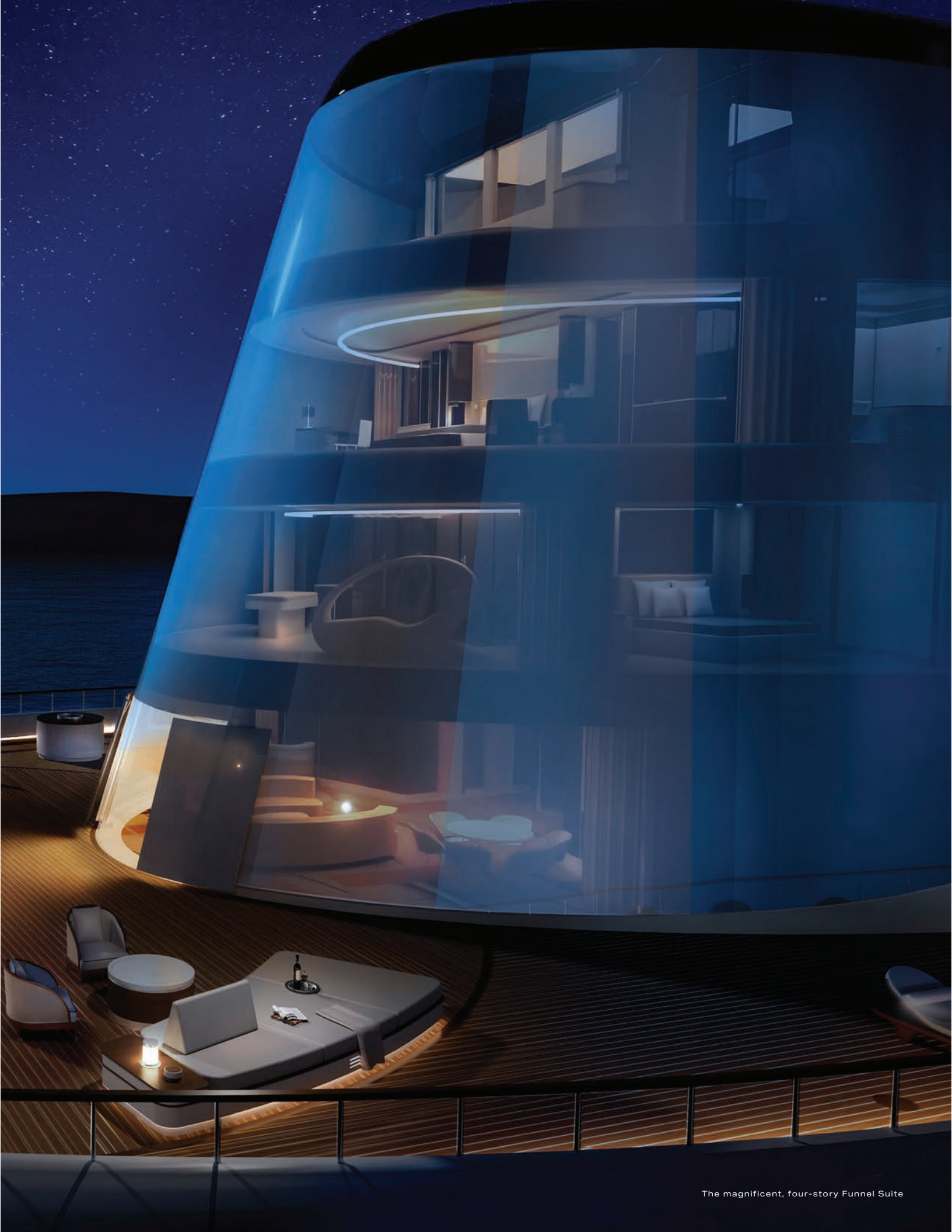


UNWIND. IN STYLE

# YOUR SPACIOUS SANCTUARY





The magnificent, four-story Funnel Suite

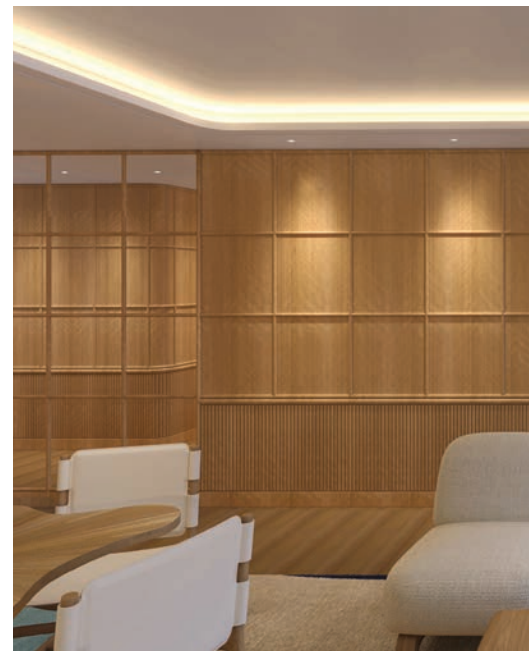


YOUR SUITE ESCAPE

# LUXURY MEETS *SERENITY*

A new level of yachting style and comfort, your home at sea is a sanctuary of all-suite, residential-style accommodations. Each expansive suite has been meticulously designed for an unmatched sea-to-sky aesthetic that is nothing short of extraordinary.

Choose from a diverse range of luxurious accommodations, from over 500 to nearly 10,000 total square feet (46 to 929 total square metres)—setting a new benchmark as the largest of its kind. With the highest ratio of space-per-guest at sea, each well-appointed suite is nearly double the size of others in our class, ensuring you enjoy the ultimate in comfort, privacy, and sophistication.



Seamless connectivity, unlock suite possibilities



Loft Suite private terrace, where sky meets sea

Along with floor-to-ceiling windows, each of our 95 suites boasts private terraces with indoor-outdoor panoramic sea views; spa-inspired, double vanity bathrooms; a walk-in closet; and an abundance of voyage-enhancing amenities. For added convenience, 12 suites also offer adjoining quarters for personal staff—the first of their kind.

## THE SIGNATURE SUITE DIFFERENCE

Guests in Signature Suites enjoy the largest and most exclusive accommodations. Ranging from two to three bedrooms across multiple deck levels, each exquisite suite offers floor-to-ceiling ocean views, an expansive private terrace with splash pool and loungers, ample room to entertain, and other exceptional Four Seasons amenities.



Expand your view with a connecting terrace



## TAILORED TO PERFECTION

Your suite adapts to your vision, allowing you to select the one that precisely meets your needs—and for an unrivalled level of exclusivity, you may even custom-build your own accommodation space. Numerous suites connect vertically or horizontally to accommodate larger travelling parties, offering various configurations and full private deck add-ons to maximize space.



Elevated bliss: four stories of panoramic ocean vistas

## SIGNATURE SUITE

# *FUNNEL*

### 1 SUITE

Nestled within the yacht's glass-enclosed funnel, our largest, most exclusive suite offers uninterrupted sea vistas through panoramic, floor-to-ceiling windows. It boasts three bedrooms, each with walk-in closets, spread across four levels of opulent living space connected by a private elevator and staircase.

Indulge in a sunset dip in your private splash pool, maintain your fitness in your outdoor gym, and savour unforgettable meals prepared in your personal kitchen before dining al fresco on your sprawling terrace.



Host in grandeur



One of three expansive guest suites



Luxury bathrooms

## YOUR ACCOMMODATION

TOTAL SPACE | **9,975** ft<sup>2</sup> (927 m<sup>2</sup>)

**Suite:** 5,057 ft<sup>2</sup> (470 m<sup>2</sup>)

**Terrace:** 4,917 ft<sup>2</sup> (457 m<sup>2</sup>)

**Occupancy:** Five adults and one infant or one child\*

**Decks:** 11, 12, 14, 15 FWD

⦿ Ability to connect with up to three additional suites.

\*A child is aged 12 years or under



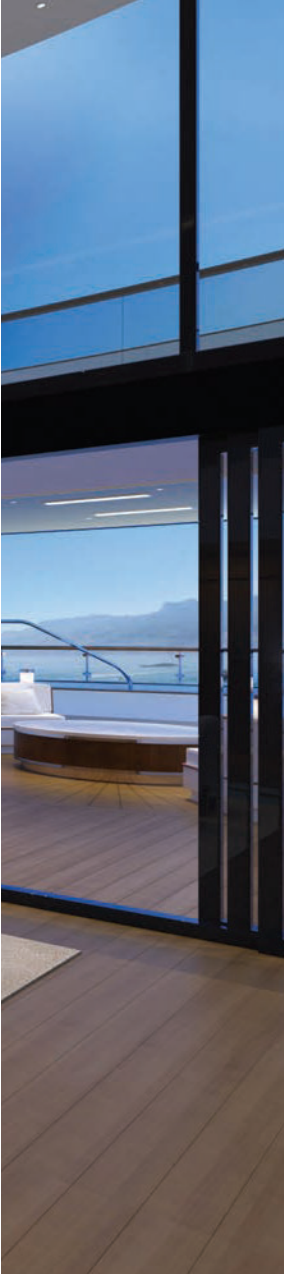
Endless horizons with towering, wraparound windows spanning two levels

## SIGNATURE SUITE

# LOFT

### 1 SUITE

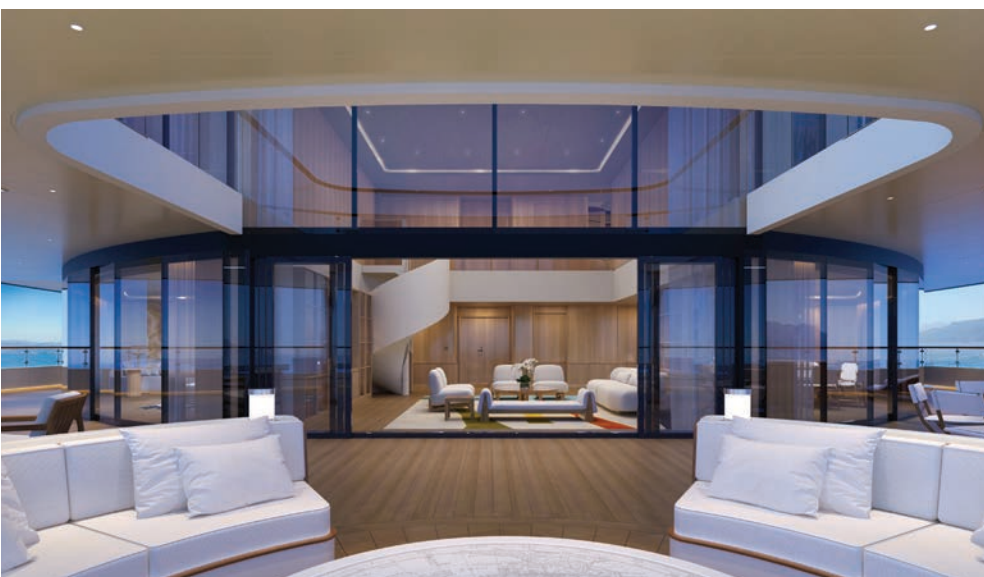
It's easy to feel at home in our Loft Suite, featuring three bedrooms, a private splash pool, and an outdoor gym. Relax in your personal sauna and steam room, gather for meals on your private terrace, and soak in endless views through wraparound windows that span two levels. For those travelling in a group, our Loft Suite can connect with up to seven neighbouring suites to accommodate up to 20 guests.



Elevated, three-bedroom comfort, each with walk-in closets



Three double vanity bathrooms



Elegant entertaining, signature style

## YOUR ACCOMMODATION

TOTAL SPACE | **7,952** ft<sup>2</sup> (739 m<sup>2</sup>)

**Suite:** 3,562 ft<sup>2</sup> (331 m<sup>2</sup>)

**Terrace:** 4,390 ft<sup>2</sup> (408 m<sup>2</sup>)

**Occupancy:** Six adults and one infant or one child\*

**Decks:** 9, 10 AFT

\*A child is aged 12 years or under





Poolside lounge area and option to connect with one suite

## SIGNATURE SUITE

# *PORTOFINO*

**1**  
SUITE

Our aft-facing, three-bedroom Portofino Suite keeps you connected to the sea throughout your voyage. Watch the sunset in your private splash pool, enjoy dinner on your spacious terrace, and swap stories around your circular outdoor lounge.



Residential dining and living room area



Luxurious three-bedroom suites with walk-in closets



Three marble-clad bathrooms

## YOUR ACCOMMODATION

TOTAL SPACE | **4,219** ft<sup>2</sup> (392 m<sup>2</sup>)

Suite: 2,142 ft<sup>2</sup> (199 m<sup>2</sup>)

Terrace: 2,077 ft<sup>2</sup> (193 m<sup>2</sup>)

Occupancy: Six adults and one infant or one child\*

Decks: 8 AFT

⦿ Adjoining personal staff studio available with connecting suite.

\*A child is aged 12 years or under



Captivating views and expansive space, each bedroom with walk-in closets

## SIGNATURE SUITE

# MÁLAGA

1

SUITE

Our forward-facing Málaga Suite offers breathtaking ocean views from three tranquil bedrooms, a powder room, and three spa-like, marble bathrooms. A splash pool and outdoor dining table for six await on your expansive private terrace.



Dive into luxury on a private terrace



Indoor/outdoor living space and option to connect with up to three additional suites



Bathe in pure marble elegance

## YOUR ACCOMMODATION

**TOTAL SPACE** | 3,744 ft<sup>2</sup> (348 m<sup>2</sup>)

**Suite:** 2,055 ft<sup>2</sup> (191 m<sup>2</sup>)

**Terrace:** 1,689 ft<sup>2</sup> (157 m<sup>2</sup>)

**Occupancy:** Six adults and one infant or one child\*

**Deck:** 7 FWD

Ⓞ Adjoining personal staff studio available with connecting suite.

\*A child is aged 12 years or under



Open-concept dining and living room, with indoor-outdoor spaces

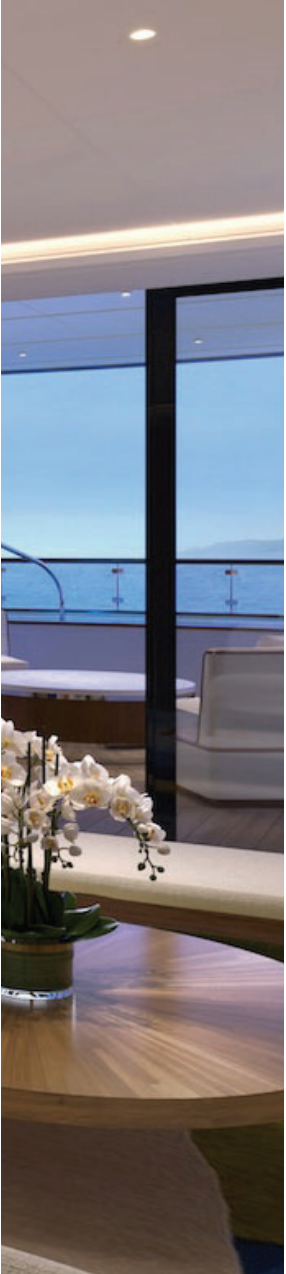
## SIGNATURE SUITE

# *SAIN'T-TROPEZ*

1

SUITE

Watch the wake from the splash pool on your large private terrace, enjoy meals al fresco or from the comfort of your open-concept dining and living room, and unwind in two well-appointed bedrooms with marble bathrooms that feature soaking tubs and walk-in showers.



Two sumptuous king-bed suites, each with walk-in closets



Outdoor terrace with pool and option to connect to three additional suites



Two spacious bathrooms with walk-in showers and bath option

## YOUR ACCOMMODATION

TOTAL SPACE | **4,207** ft<sup>2</sup> (391 m<sup>2</sup>)

Suite: 1,743 ft<sup>2</sup> (162 m<sup>2</sup>)

Terrace: 2,464 ft<sup>2</sup> (229 m<sup>2</sup>)

Occupancy: Four adults and one infant or one child\*

Decks: 7 FWD

\*A child is aged 12 years or under



One of two king-sized bed suites

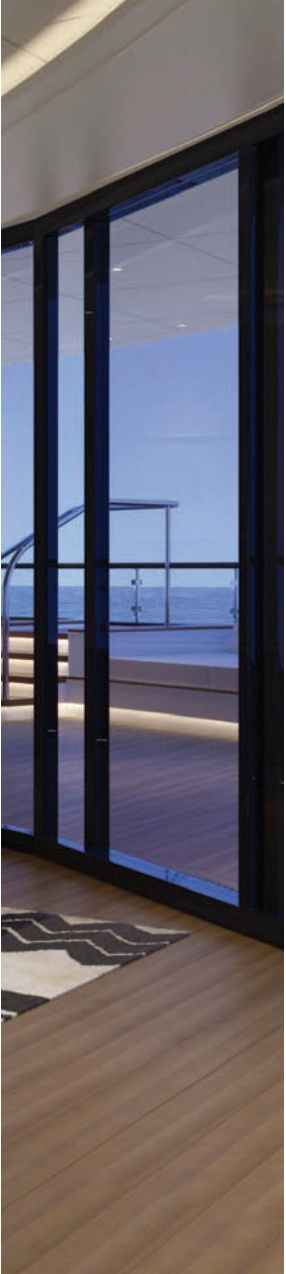
## SIGNATURE SUITE

# MILOS

1

SUITE

In our forward-facing Milos Suite, you'll enjoy captivating vistas from two spacious king bedrooms complete with marble bathrooms that feature a soaking tub and walk-in showers. Relax on your spacious terrace with its own private splash pool.



Entertainment for all in your impressive living space



Private splash pool and option to connect to two additional suites



Luxuriate in two marble bathrooms, with bath and shower options

## YOUR ACCOMMODATION

TOTAL SPACE | **3,153** ft<sup>2</sup> (293 m<sup>2</sup>)

**Suite:** 1,636 ft<sup>2</sup> (152 m<sup>2</sup>)

**Terrace:** 1,517 ft<sup>2</sup> (141 m<sup>2</sup>)

**Occupancy:** Four adults and one infant or one child\*

**Decks:** 10 FWD

⊗ Adjoining personal staff studio available with connecting suite.

\*A child is aged 12 years or under





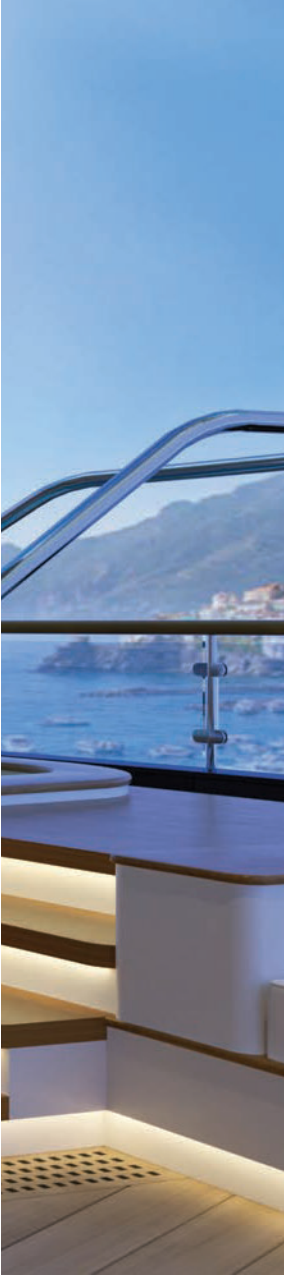
Private terrace for day or night entertaining

## SIGNATURE SUITE

# ST BARTHS

## 1 SUITE

Our two-bedroom St Barths Suite offers wraparound, forward-facing sea views, two well-appointed bedrooms, and two marble bathrooms with bathtubs and walk-in showers. A private terrace with a splash pool serves as the perfect place to dine or unwind.



Tranquil seclusion with breathtaking vistas



Seamless design for spacious living and dining



Elevated spa-like high-end designer fixtures

## YOUR ACCOMMODATION

TOTAL SPACE | **2,981** ft<sup>2</sup> (277 m<sup>2</sup>)

**Suite:** 1,582 ft<sup>2</sup> (147 m<sup>2</sup>)

**Terrace:** 1,399 ft<sup>2</sup> (130 m<sup>2</sup>)

**Occupancy:** Four adults and one infant or one child\*

**Decks:** 8 FWD

Ⓞ Adjoining personal staff studio available with connecting suite.

\*A child is aged 12 years or under



Shared, open spaces with ocean views

16

SUITES

# GRAND OCEAN

SUITES

Designed in an L-shape to maximize ocean views and outdoor space, our one-bedroom Grand Ocean Suites offer total comfort and privacy. Each features a spa-like double vanity bathroom with a soaking tub and walk-in shower, a powder room with a shower, a convertible sleeper sofa, and a large private terrace.

## YOUR ACCOMMODATION

TOTAL SPACE | 1,012 to 1,140 ft<sup>2</sup> (94 to 106 m<sup>2</sup>)

**Suite:** 818 ft<sup>2</sup> (76 m<sup>2</sup>)

**Terrace:** 194 to 322 ft<sup>2</sup> (18 to 30 m<sup>2</sup>)

**Occupancy:** Three adults, or two adults and two children\* with crib option for one infant

**Decks:** 7, 8, 9, 10



Luxurious oceanfront haven with walk-in closets



Spacious terrace, indoor and outdoor dining for four



Spa-like bathroom and powder room



Seaside views and terrace tranquility

15

SUITES

# OCEAN

SUITES

Our one-bedroom Ocean Suites are characterized by their expansive, floor-to-ceiling ocean views. All feature spa-like, double-vanity bathrooms with soaking tubs and walk-in showers, spacious living rooms, convertible sleeper sofa, and expansive private terraces.

## YOUR ACCOMMODATION

TOTAL SPACE | 893 to 1,011 ft<sup>2</sup> (83 to 94 m<sup>2</sup>)

**Suite:** 764 ft<sup>2</sup> (71 m<sup>2</sup>)

**Terrace:** 129 to 247 ft<sup>2</sup> (12 to 23 m<sup>2</sup>)

**Occupancy:** Three adults, or two adults and two children\* with crib option for one infant

**Decks:** 6, 7, 8, 9, 10

Options include one accessible suite and adjoining personal staff studio.



Dine in style, entertain in excellence



Luxury marble bathroom



Suite-adjacent personal staff studio

\*A child is aged 12 years or under



Unwind and socialise on a private terrace

15

SUITES

# SUPERIOR SEAVIEW

SUITES

Our Superior Seaview Suites are easily convertible and can be requested with a king bed or split bed to best accommodate your needs. Each features a double-vanity bathroom with a soaking tub and walk-in shower and ample private terrace that yields captivating ocean views.

## YOUR ACCOMMODATION

TOTAL SPACE | 807 to 893 ft<sup>2</sup> (75 to 83 m<sup>2</sup>)

Suite: 710 ft<sup>2</sup> (66 m<sup>2</sup>)

Terrace: 97 to 183 ft<sup>2</sup> (9 to 17 m<sup>2</sup>)

Occupancy Two adults and one infant or one child\*

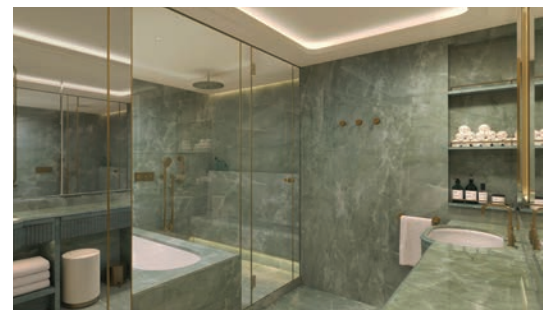
Decks: 7, 8, 9, 10



Captivating views & indoor dining table for two



King, double, or twin bed configuration



Double vanity bathroom with bathtub and walk-in shower



Floor to ceiling views from private terrace

# 42

SUITES

## SEAVIEW SUITES

Perfect for two, our Seaview Suites are beautiful ocean retreats. Recharge in a tranquil, spacious bedroom with a double-vanity marble bathroom and enjoy endless views from your private terrace.

### YOUR ACCOMMODATION

TOTAL SPACE | **537 to 613** ft<sup>2</sup> (50 to 57 m<sup>2</sup>)

**Suite:** 473 ft<sup>2</sup> (44 m<sup>2</sup>)

**Terrace:** 64 to 140 ft<sup>2</sup> (6 to 13 m<sup>2</sup>)

**Occupancy** Two adults, or two adults and one infant

**Decks:** 5, 6, 7, 8, 9, 10

Options include one accessible suite and adjoining personal staff studio.



Tranquil, spacious bedroom with a king bed



Endless possibilities to combine Seaview Suites



Double-vanity bathroom with shower

FIND YOUR NORTH STAR

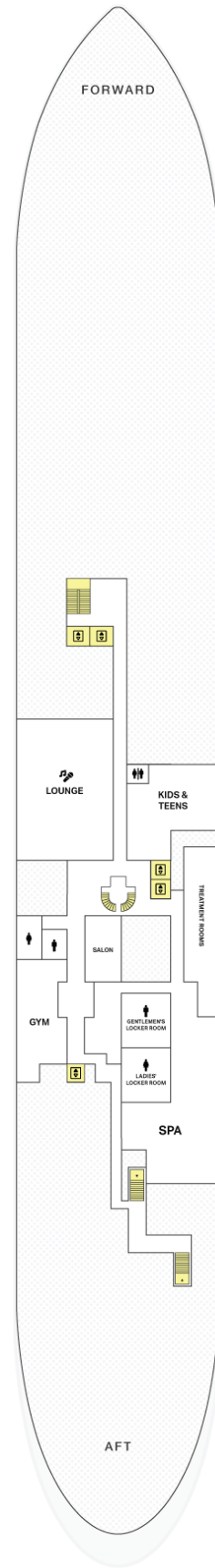
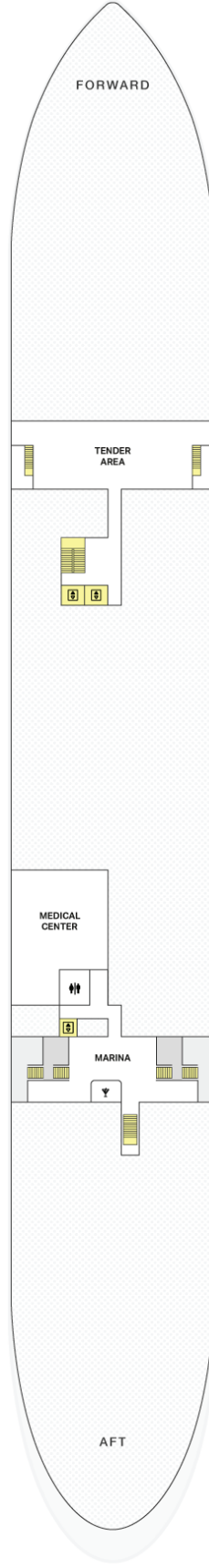
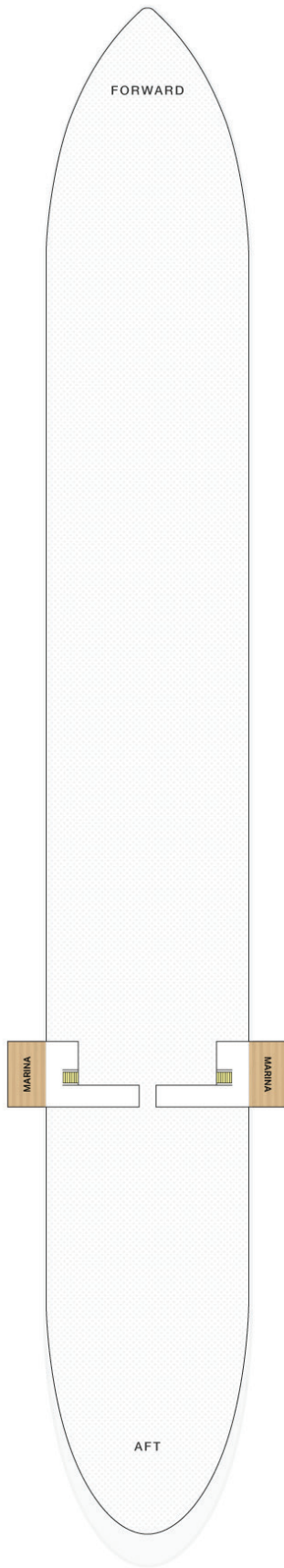
# NAVIGATE OUR DECK & FLOOR PLANS

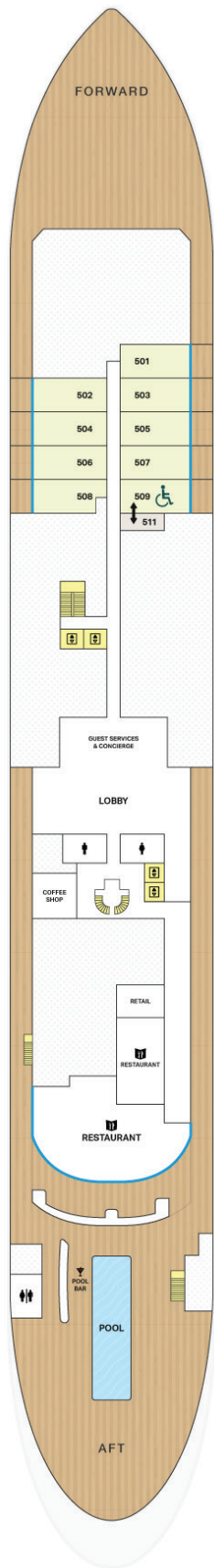




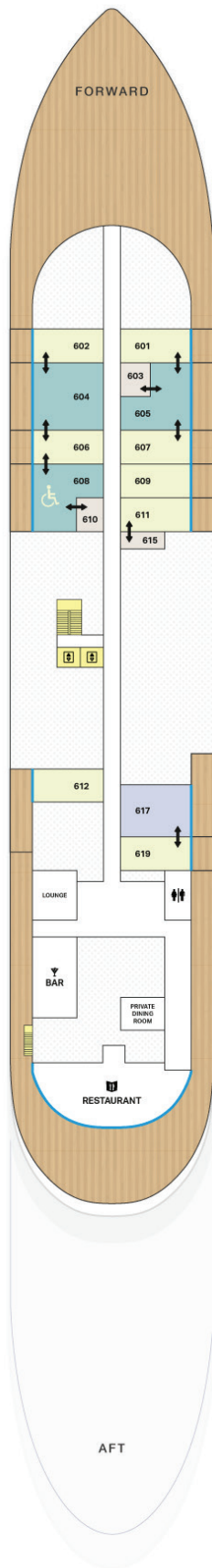
FOUR SEASONS  
YACHTS



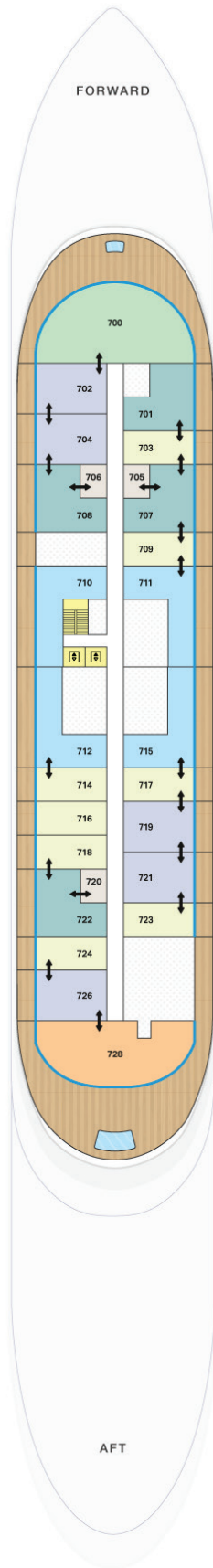




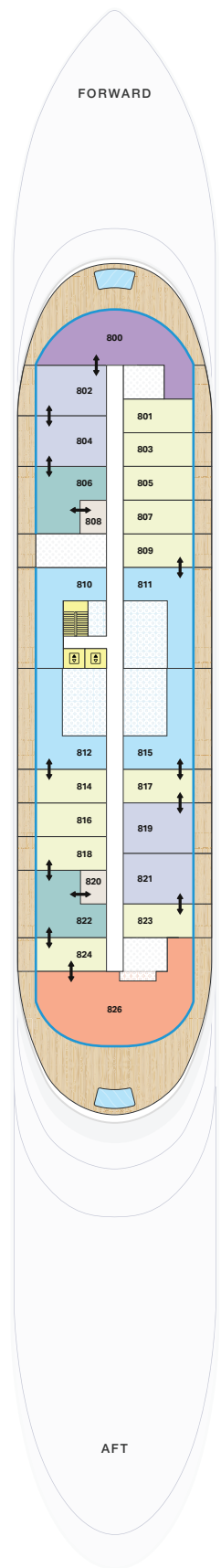
DECK 5



DECK 6

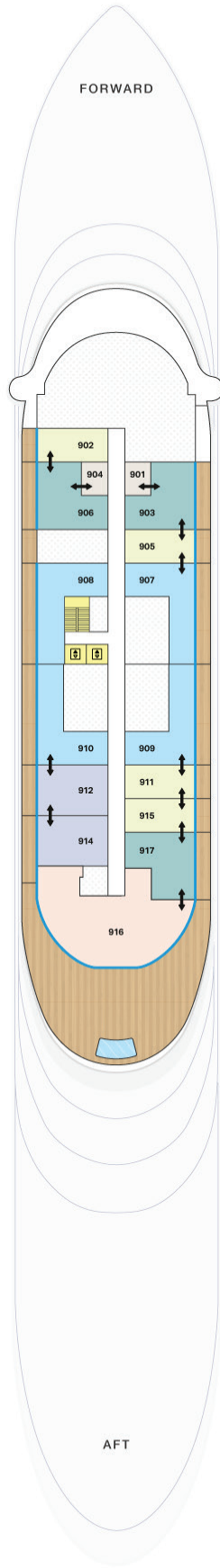


DECK 7

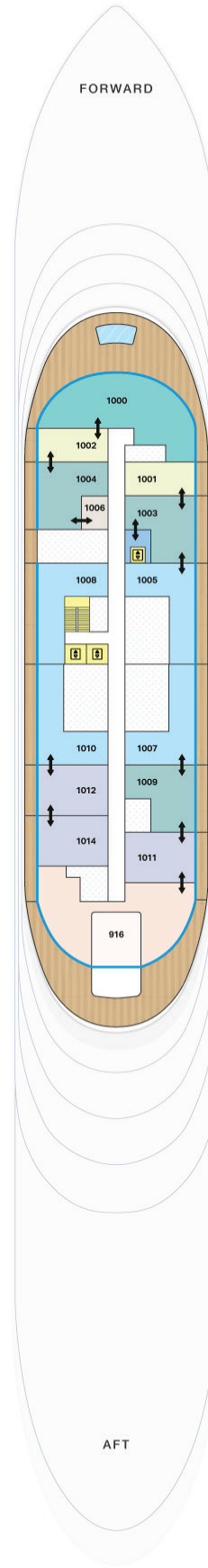


DECK 8

- Accessible Ocean Suite
- Accessible Seaview Suite
- Saint-Tropez Suite
- Superior Seaview Suite
- Ocean Suite
- Grand Ocean Suite
- Portofino Suite
- Málaga Suite
- St Barths Suite
- Seaview Suite
- PA Studio
- Stairs & Lifts
- Connecting Option

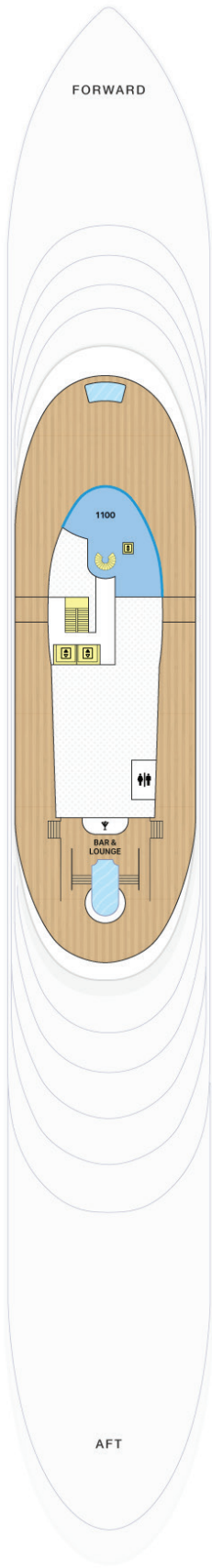


DECK 9

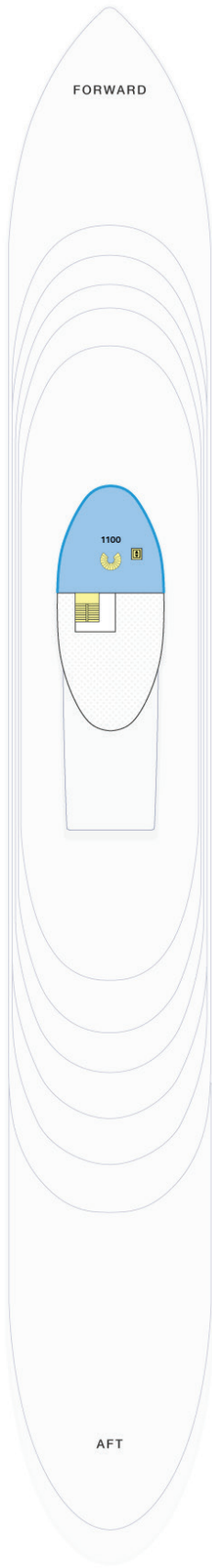


DECK 10

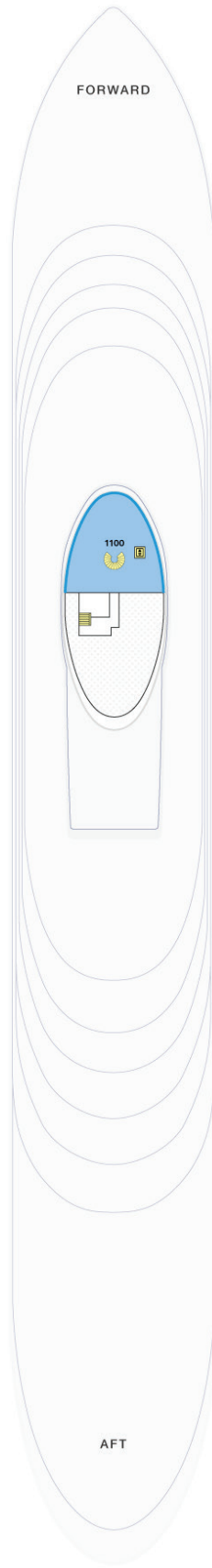
- Loft Suite
- Grand Ocean Suite
- Milos Suite
- Superior Seaview Suite
- Seaview Suite
- Stairs & Lifts
- PA Studio
- Connecting Option



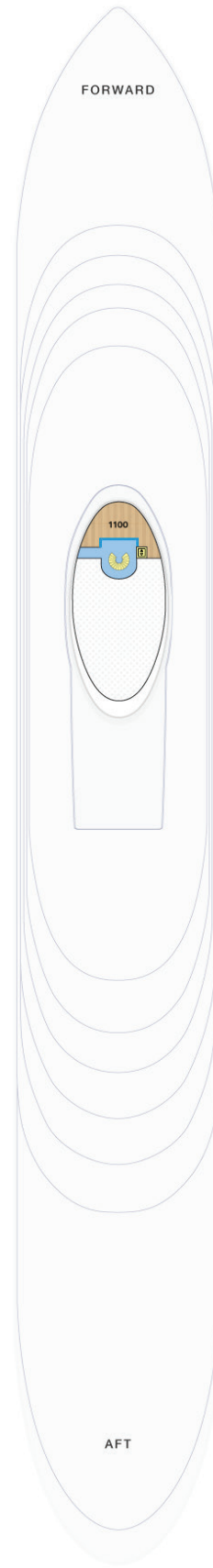
DECK 11



DECK 12



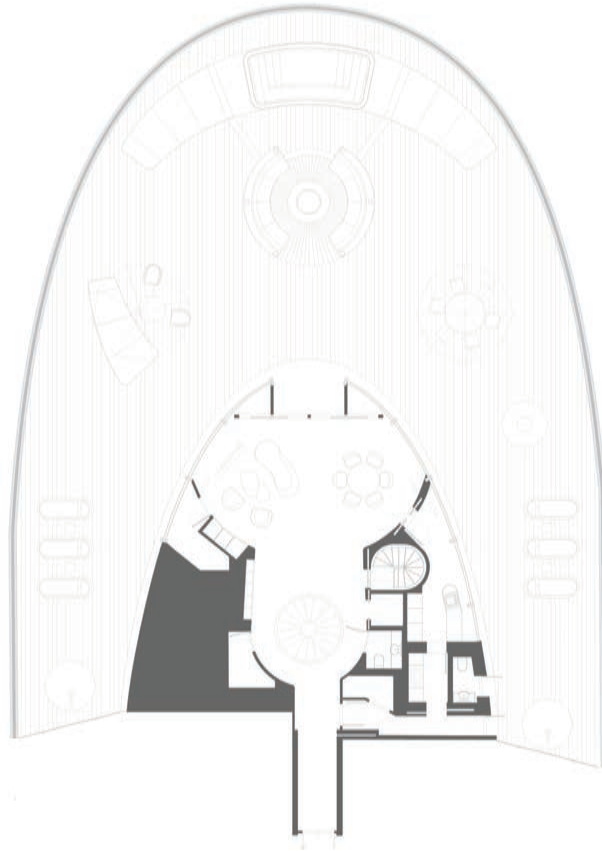
DECK 14



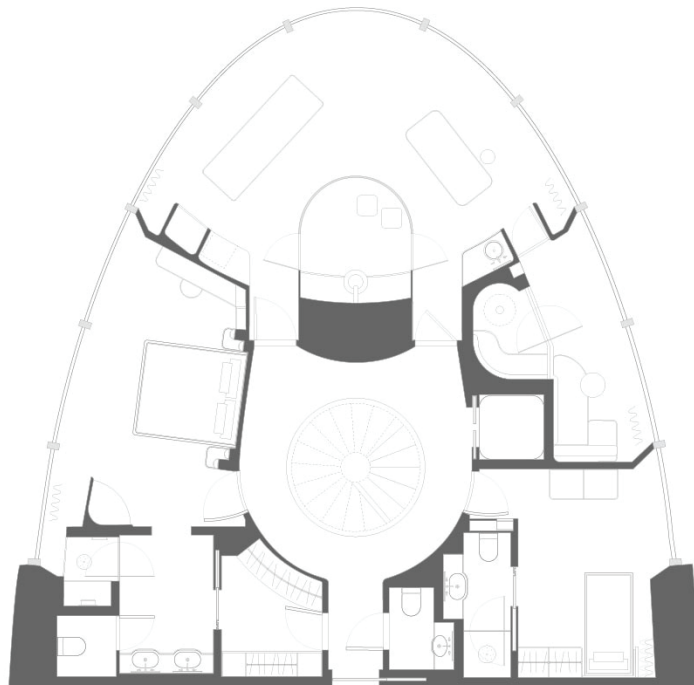
DECK 15

■ Funnel Suite  
■ Stairs & Lifts

FUNNEL SUITE

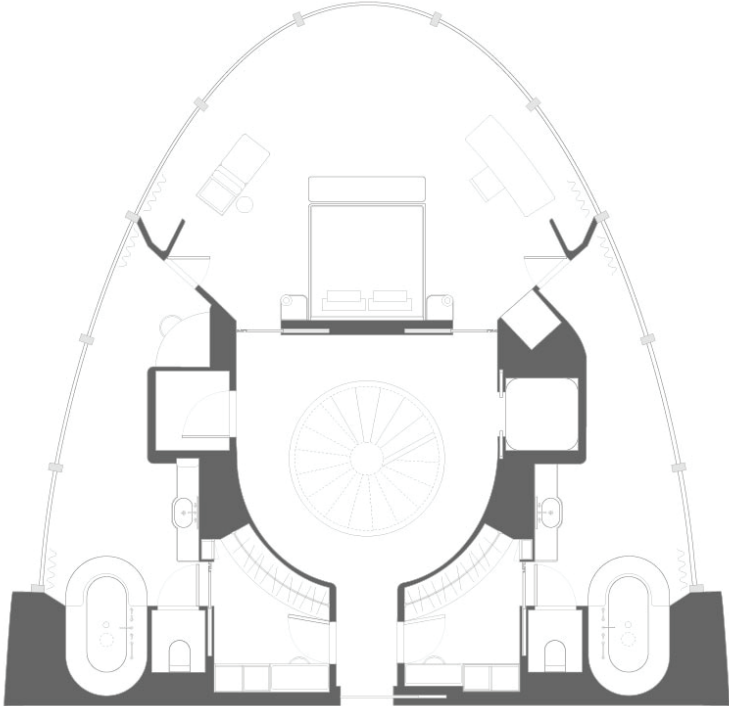


DECK 11

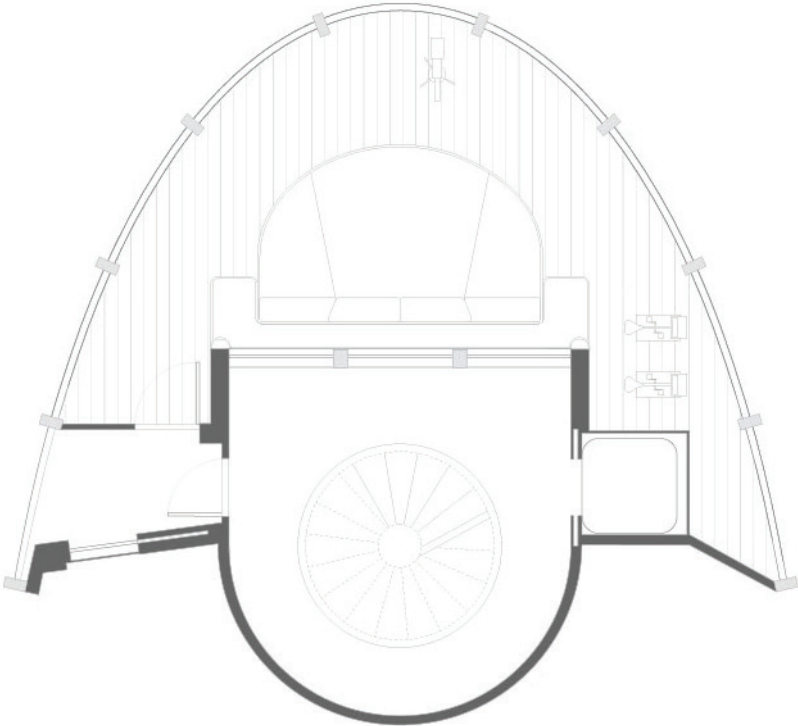


DECK 12

FUNNEL SUITE

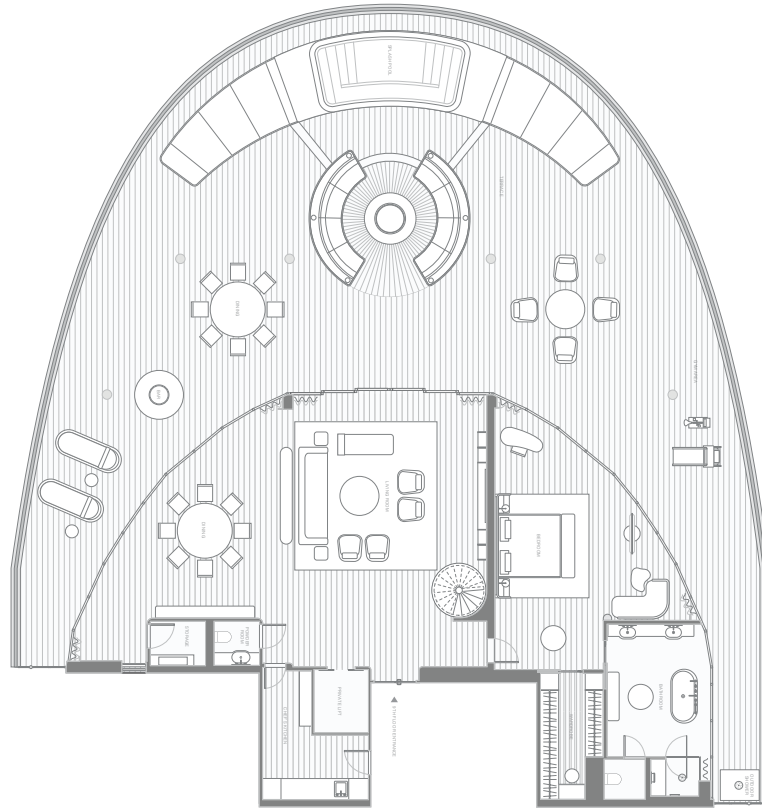


DECK 14

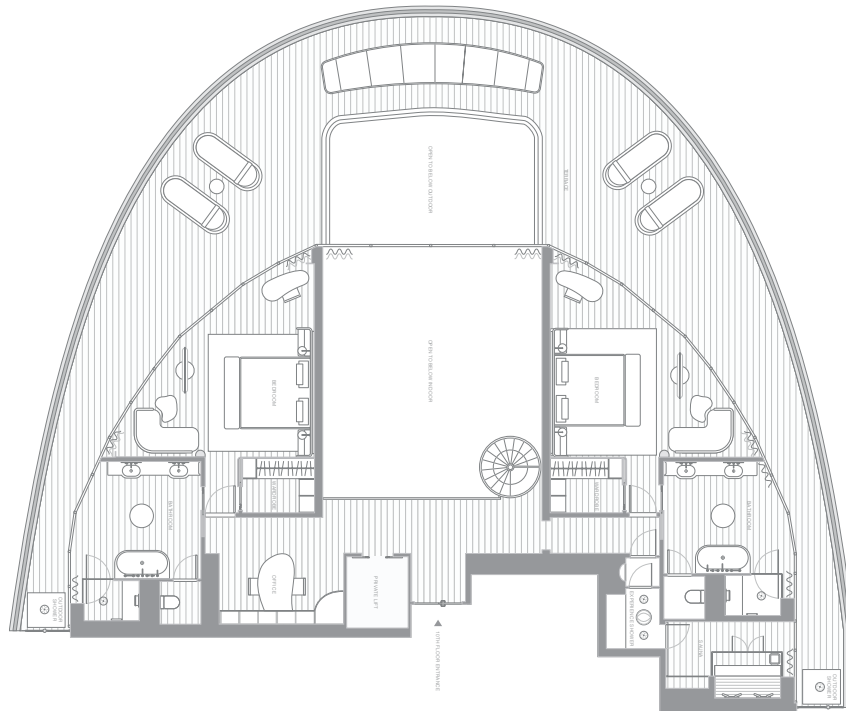


DECK 15

LOFT SUITE



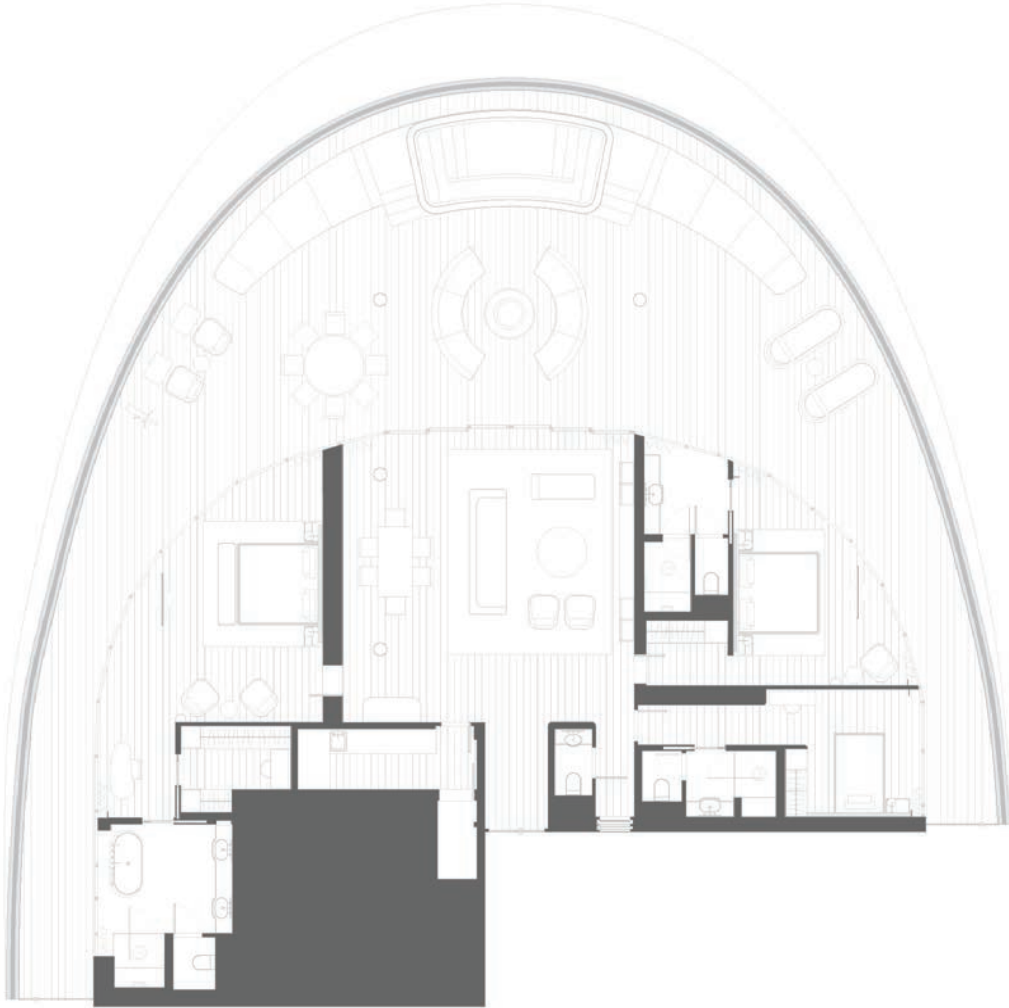
DECK 9



DECK 10

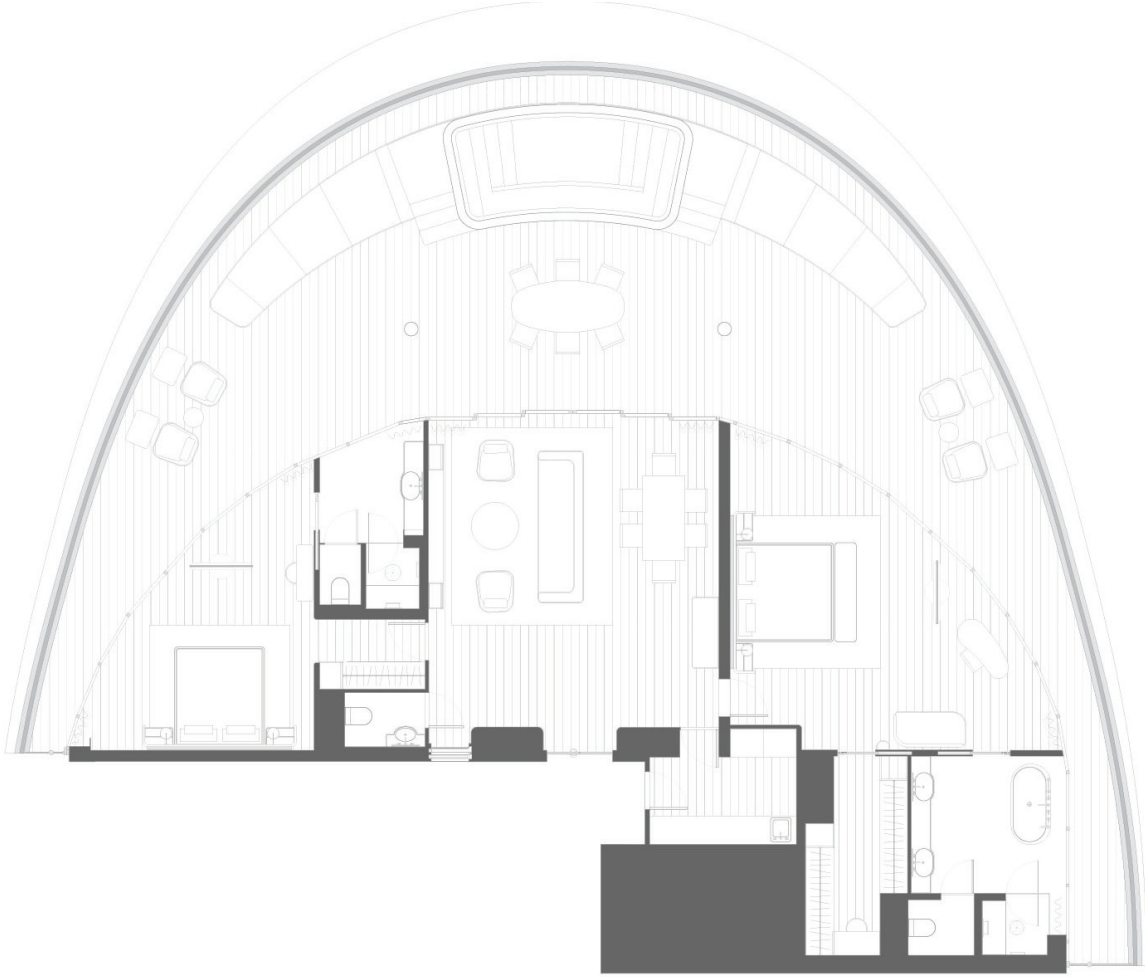
# PORTOFINO SUITE

---



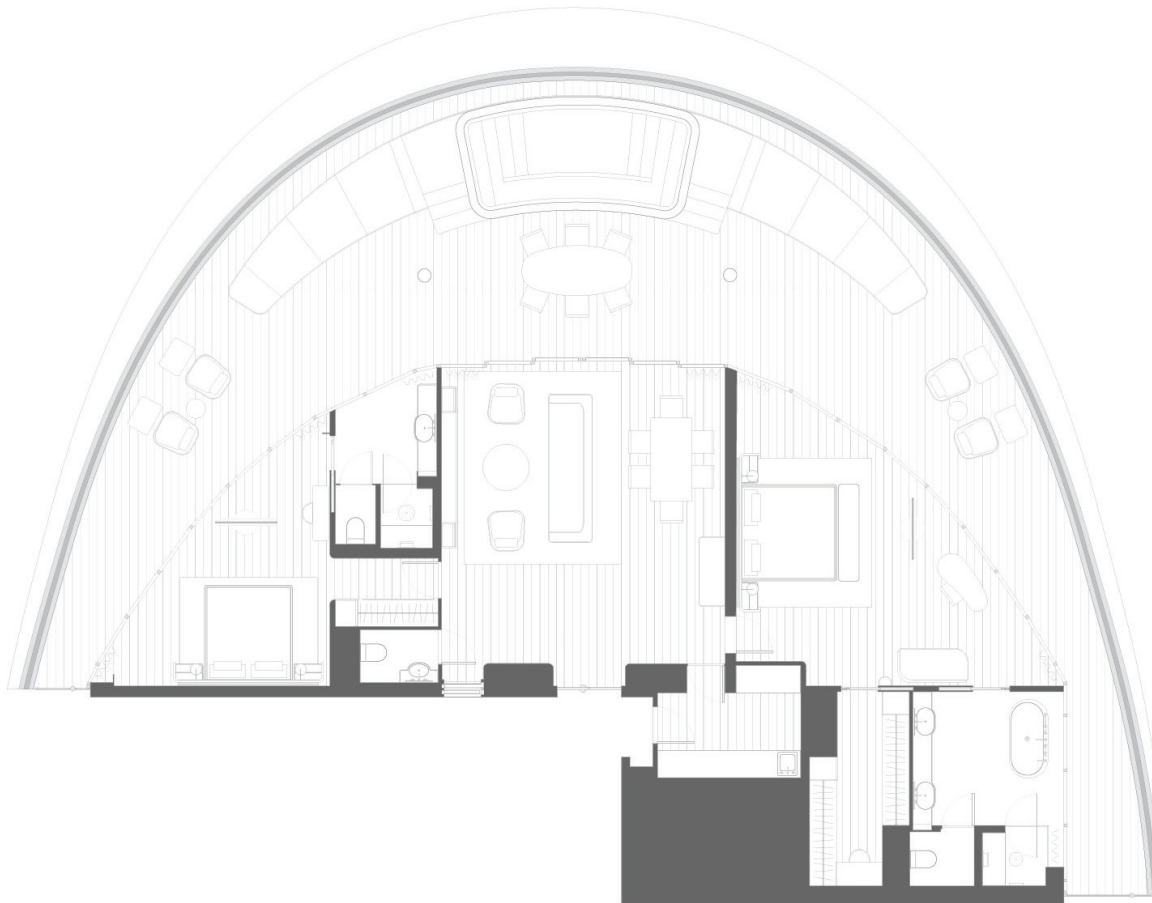


MILOS SUITE

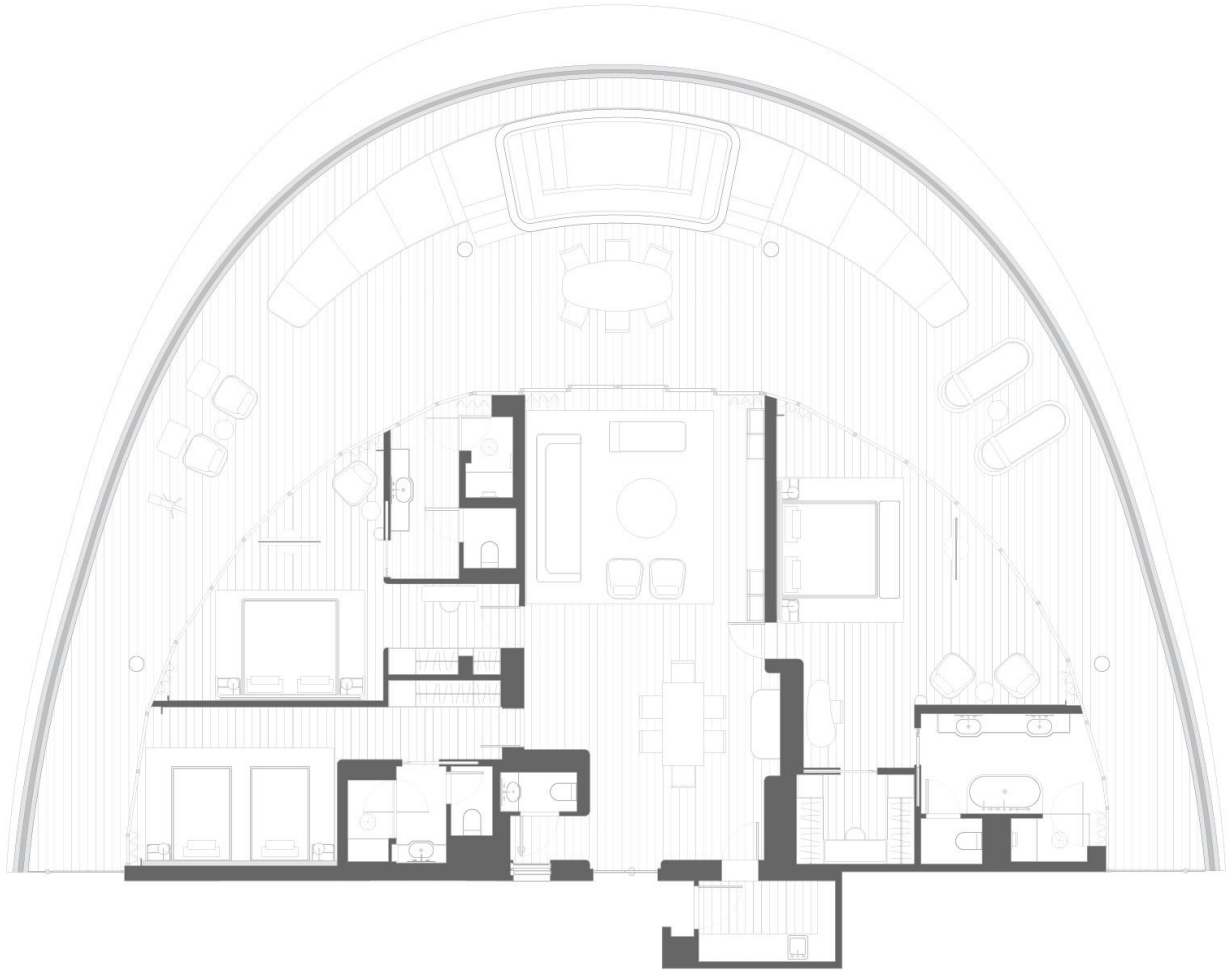


# ST BARTHS SUITE

---

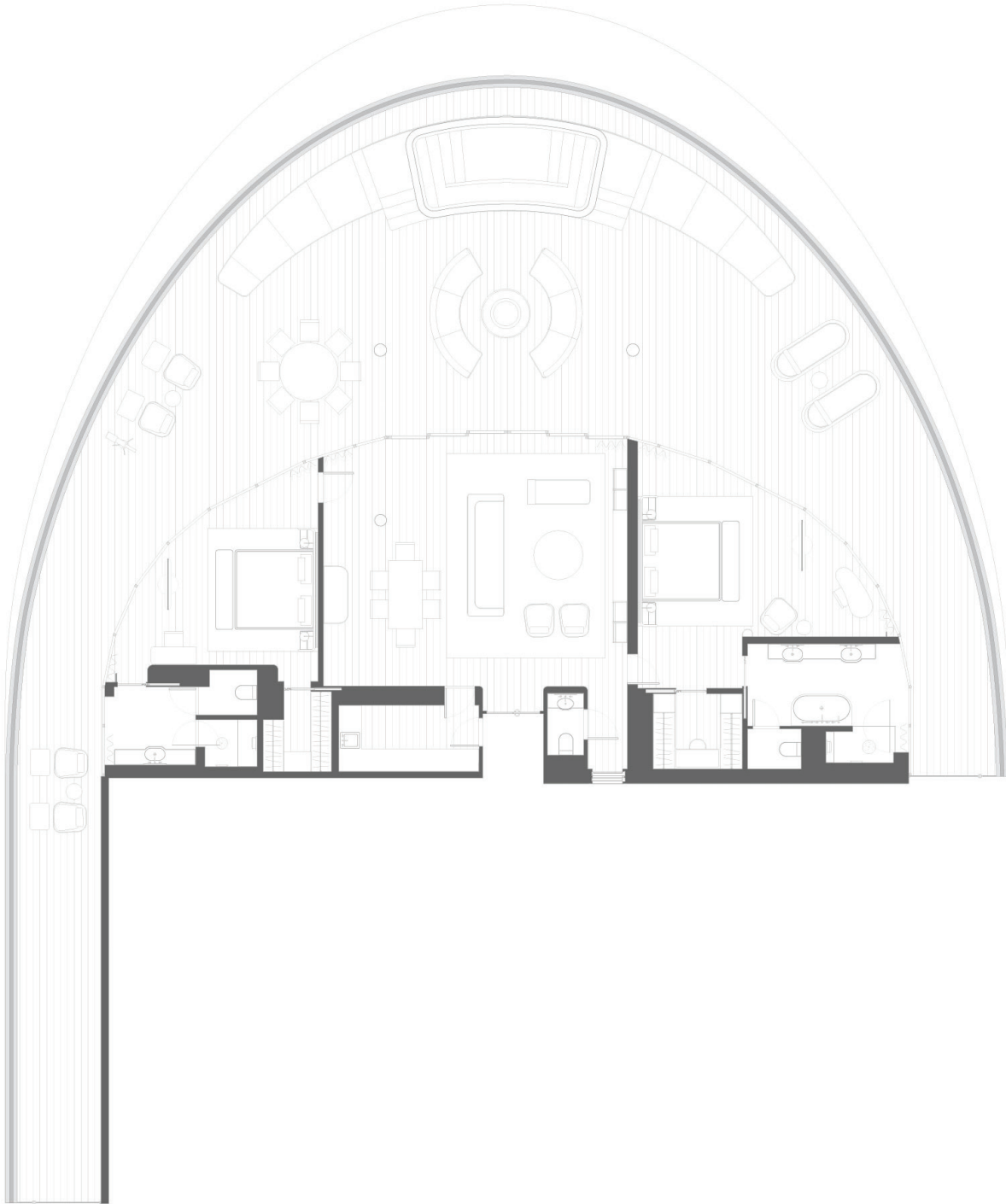


MÁLAGA SUITE



# SAINT-TROPEZ SUITE

---

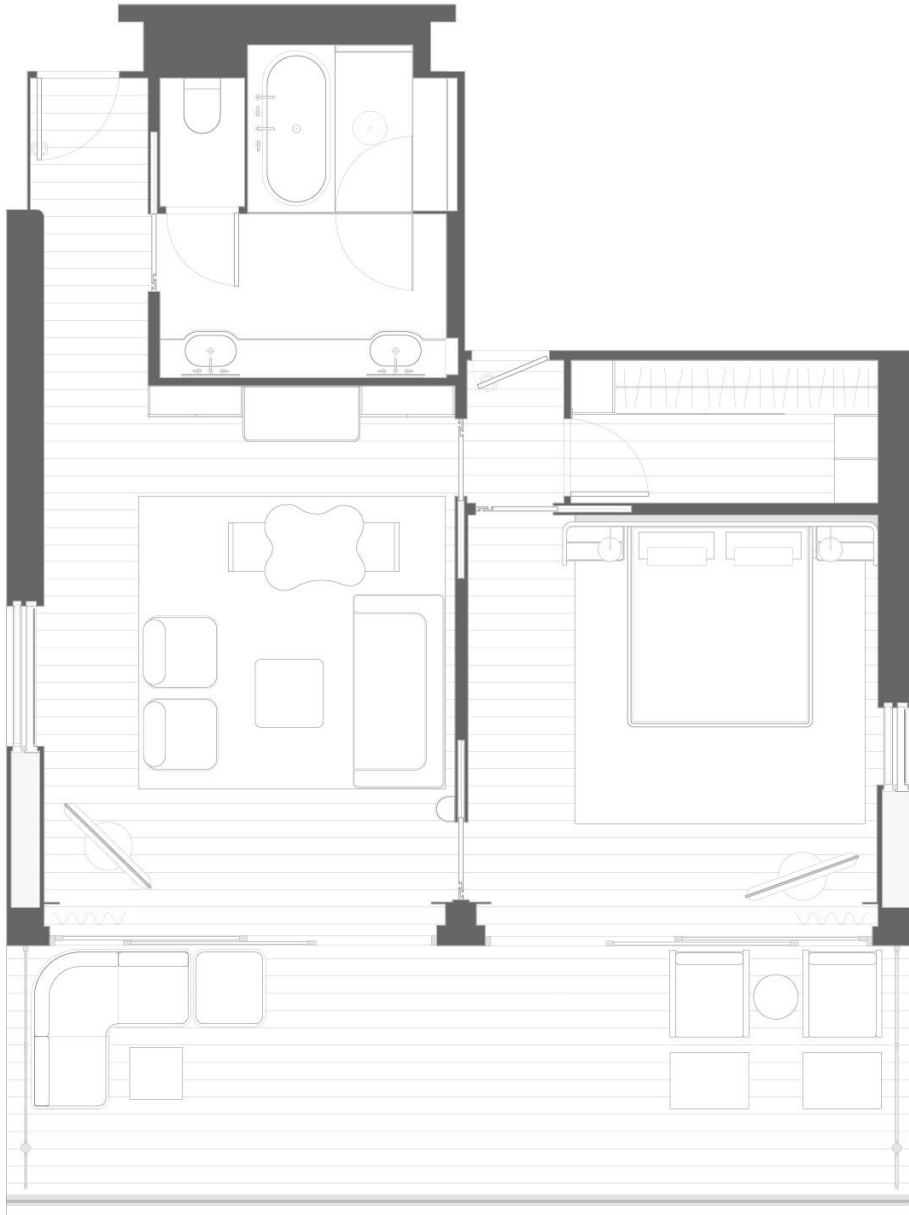


GRAND OCEAN SUITE

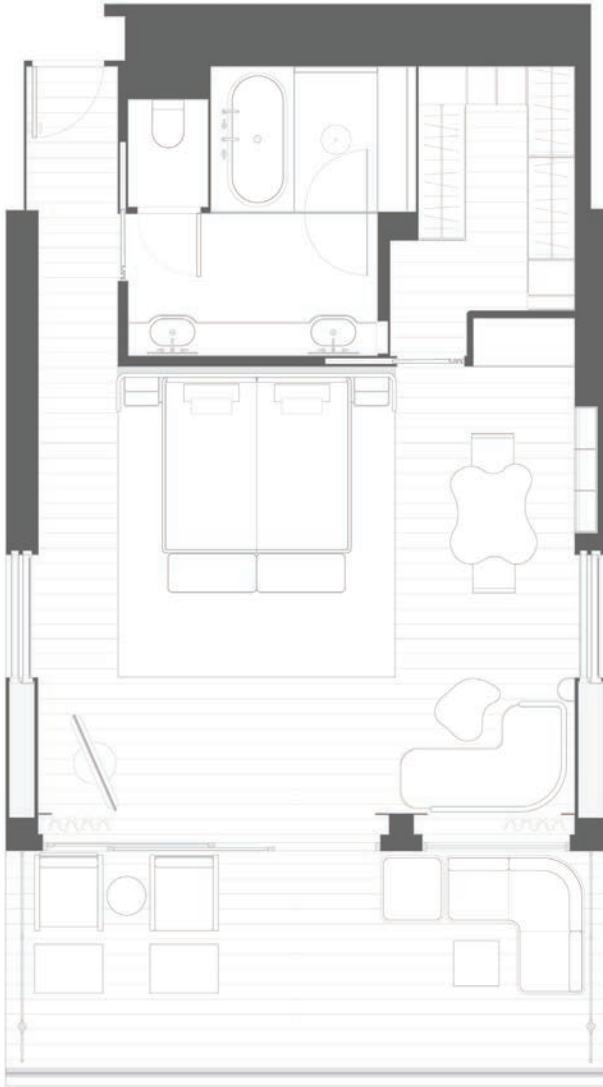


# OCEAN SUITE

---



SUPERIOR SEAVIEW SUITE



KING BED CONFIGURATION



SPLIT BED CONFIGURATION

# SEAVIEW SUITE

---

